



THISTLE RESOURCES CORP. ANNOUNCES

The Acquisition of ALBA FORKS GOLD, Bathurst Mining Camp (BMC), NB

***** FOR IMMEDIATE RELEASE *****

BATHURST, New Brunswick, Canada – (Monday August 24th, 2020)

Thistle Resources Corp. ("TRC" or the "Company") is pleased to announce the 100% acquisition of Alba Forks Gold, in the prolific Bathurst Mining Camp (BMC), New Brunswick. Thistle Resources purchased the Project from Red Draw Mining Corp, a New Brunswick Mining Company.

The “Alba Forks Gold Project” is located along the north side of the Upsalquitch River, approximately 75 kilometers west of Bathurst, New Brunswick, along the northwest flank of the spectacular Bathurst Mining Camp.

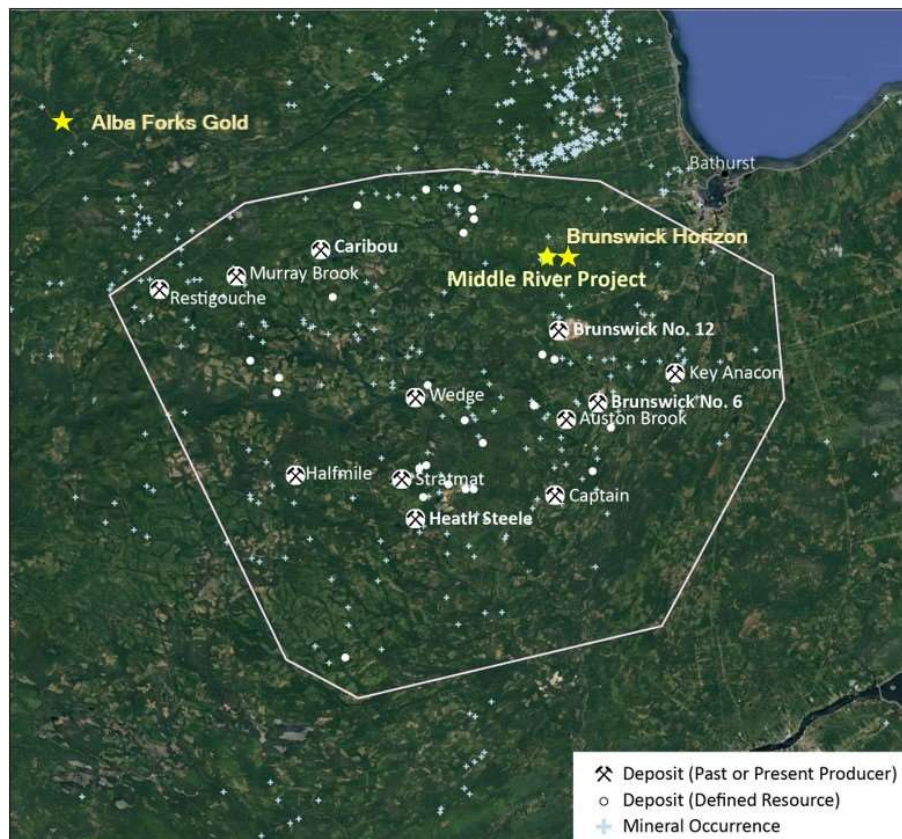


FIGURE 1: Alba Forks Gold Project – BMC Location

Geologically, the project area lies along the flank of a northeast trending sedimentary / volcanic contact that hosts numerous gold / silver mineral occurrences and lesser showings of lead and zinc.

In 1987, the New Brunswick Department of Mines conducted a regional basal till survey in the Upsalquitch River area, identifying 7 highly elevated gold anomalies. The 7 key anomalies follow a northeast trend from the Williams Brook Gold showings in the south to the Leveque Gulch gold and antimony occurrences in the northeast, approximately 20 kilometers.

The Alba Forks Gold Project covers one of those targets, a large north south trending Au target, approximately 2km in length having a peak value of 353 ppb Au.

Historic sampling identified anomalous base and precious metal values up to 1% copper, 0.5% lead, 1% zinc, 0.45 ounces silver, 0.2 g/t Au. Numerous pathfinder elements indicative of potential underlying gold mineralization, including arsenic, bismuth and antimony were also highly elevated.

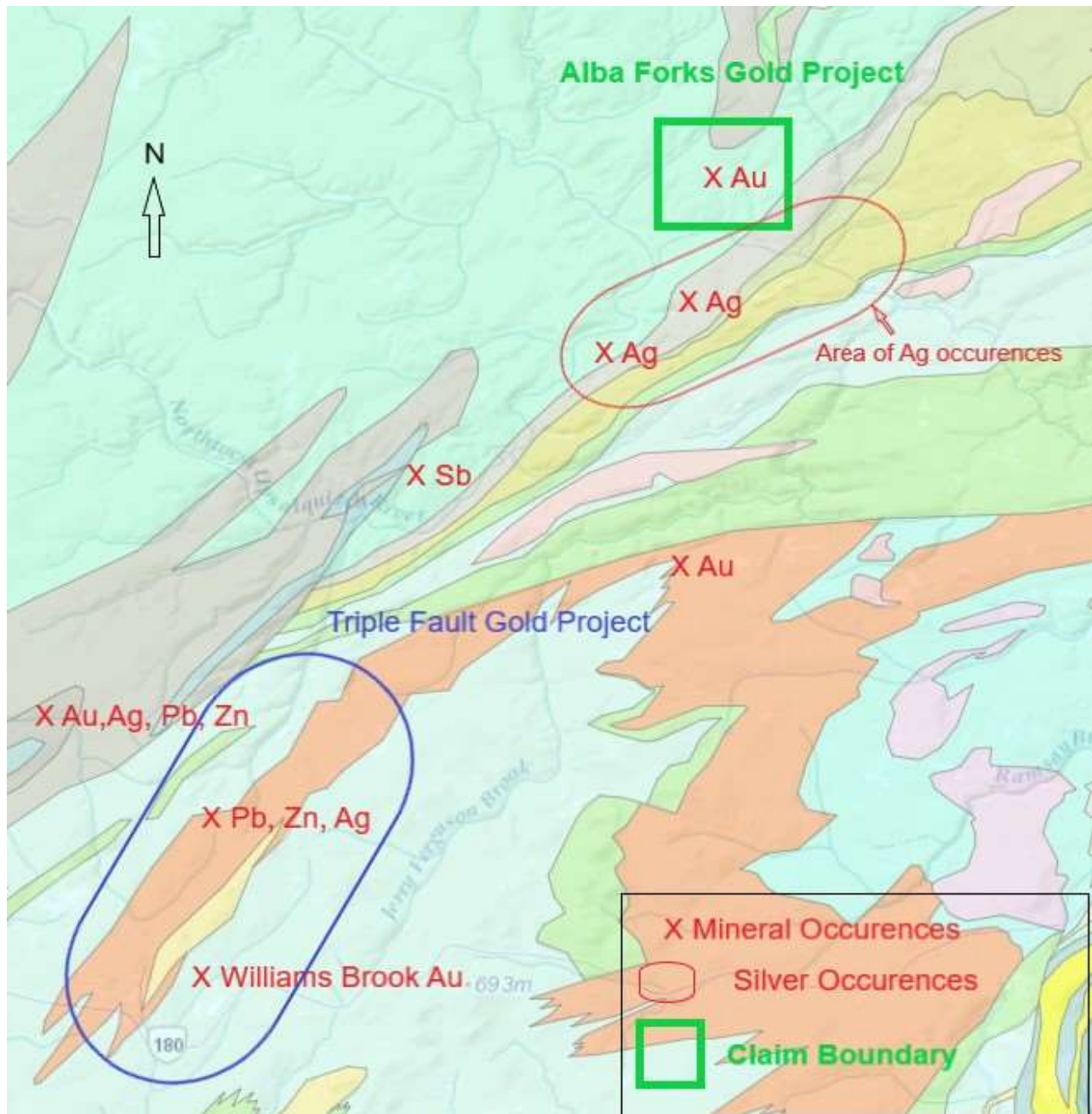


FIGURE 2: Alba Forks Gold Project - Mineral Occurrences

This acquisition in the BMC Gold Belt continues to build Thistle Resources Corp into a substantial Gold/Silver Exploration Company in the Canadian Maritimes Region. This will add significant shareholder opportunity & value, a core mission of the company. We look forward to more 2020 exploration work updates and advance a gold discovery in the BMC area, stated Patrick J Cruickshank, President & CEO.



FIGURE 3: Rusty Pyritic Volcanics & Vesicular Rusty Volcanics exposed in southern area of Alba Forks

Thistle Resources Corp. (TRC) is a private Canadian Junior Exploration Company focused on Gold-VMS exploration opportunities in the famous Bathurst Mining Camp (BMC) in Bathurst, New Brunswick.

The opinions, estimates, and/or projections contained herein are those of Thistle Resources Corp. (TRC) as of the date thereof and are subject to change without notice. TRC makes every effort to ensure the contents contained herein have been compiled or derived from sources believed reliable and contain information and opinions, which are accurate and complete. However, TRC makes no representations or warranty, express or implied, in respect thereof, takes no responsibility for errors or emissions which may be contained herein and accepts no liability whatsoever for information and its contents. The information contained herein is not to be construed as an offer to sell or solicitation for an offer to buy any securities. The officers, directors or employees may from time to time acquire, hold or sell securities mentioned herein.



Canada

