



Technical Review – December 1st , 2021

Thistle Resources Corp.

Gold-VMS Exploration & Advancement



*** THISTLE RESOURCES CORP. ANNOUNCES ***
DDH Program – Middle River Gold - VMS

Precious Metal and VMS Exploration
Bathurst Mining Camp, New Brunswick, Canada
Cape Breton Highlands, Nova Scotia, Canada



The opinions, estimates, and/or projections contained herein are those of Thistle Resources Corp. as of the date thereof and are subject to change without notice. Thistle Resources makes every effort to ensure the contents contained herein have been compiled or derived from sources believed reliable and contain information and opinions, which are accurate and complete. However, Thistle Resources makes no representations or warranty, express or implied, in respect thereof, takes no responsibility for errors or omissions which may be contained herein and accepts no liability whatsoever for information and its contents. The information contained herein is not to be construed as an offer to sell or solicitation for an offer to buy any securities.

The officers, directors or employees may from time to time acquire, hold or sell securities mentioned herein.



Summary of Projects

- **Thistle Resources Corp.** (Thistle) is a Private Canadian junior Exploration Company focused on *Base and Precious Metal Exploration* in the Bathurst Mining Camp, New Brunswick, and the Cape Breton Highlands Region, Nova Scotia, Canada. Thistle Resources Corp. has 4 Major Projects; (Middle River Gold), (Middle River VMS), (Celtic Highlands Gold) & (Alba Forks Gold).
- The **Bathurst Mining Camp (BMC)** is one of the top 3 Volcanogenic Massive Sulfide (VMS) mining districts in the world and has more than 46 known VMS deposits totaling > 475,000,000 tonnes.
- **The Middle River Property (BMC)** consists of two major projects, **Middle River Gold** and **Middle River VMS**.
- **The Middle River Gold Project** consists of two major prospects, the Middle River “Gold Zone” (MRG) and The Middle River “SIP Zone”. High Grade results over great widths...
- **The Middle River VMS Project** is located along the eastern flank of the Tetagouche Group Formation which hosts the Brunswick #6 & #12 Deposits to the south. The VMS Horizon is displayed by the 1995 Regional BMC EM Survey (Slide #6) & recent geophysical analysis projects the VMS Horizon through the Middle River Property and onto the Royal Stewart Resources’ Lor Bai Project to the north.
- **The Celtic Highlands Gold Project (Cape Breton)** is located within a 75km² area containing more than 40 known gold occurrences. (Surrounding Transition Metals “Highland Gold” Project). The Cape Breton Highlands is underlain by rocks of the Avalon Terrain, known to host both Orogenic (Mesothermal) and Epithermal gold mineralization.
- **The “Newly Acquired” Alba Forks Gold Project (BMC)** is located along the north side of the Upsalquitch River, approximately 75 kms west of Bathurst NB, along the northwest flank of the spectacular Bathurst Mining Camp (BMC). The project area lies along the flank of the northeast trending sedimentary-volcanic contact that hosts numerous Gold/Silver mineral occurrences with Lead & Zinc.



PROJECTS

Alba Forks Gold Project



Brunswick Horizon

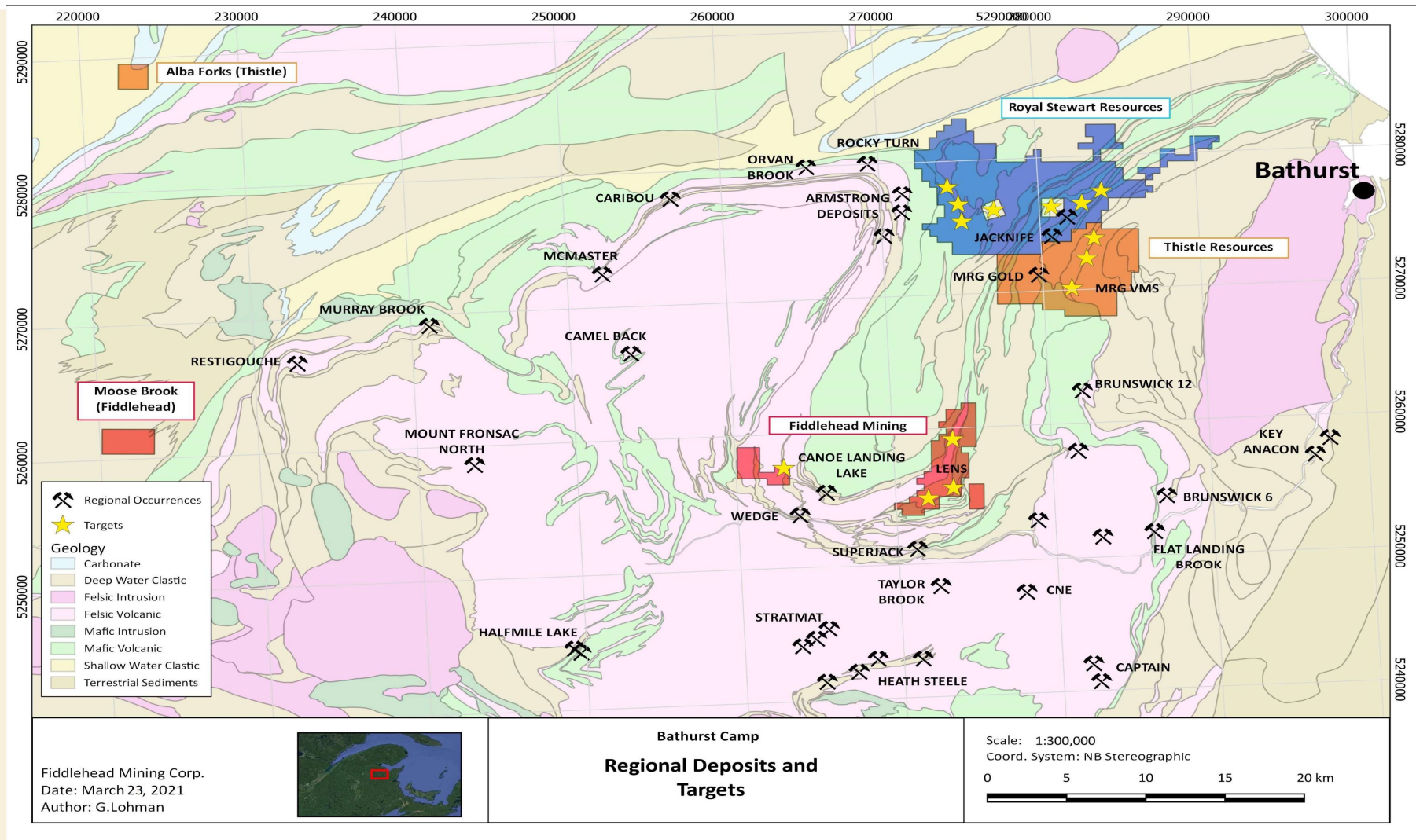


Middle River Gold Project

Celtic Highlands Gold Project



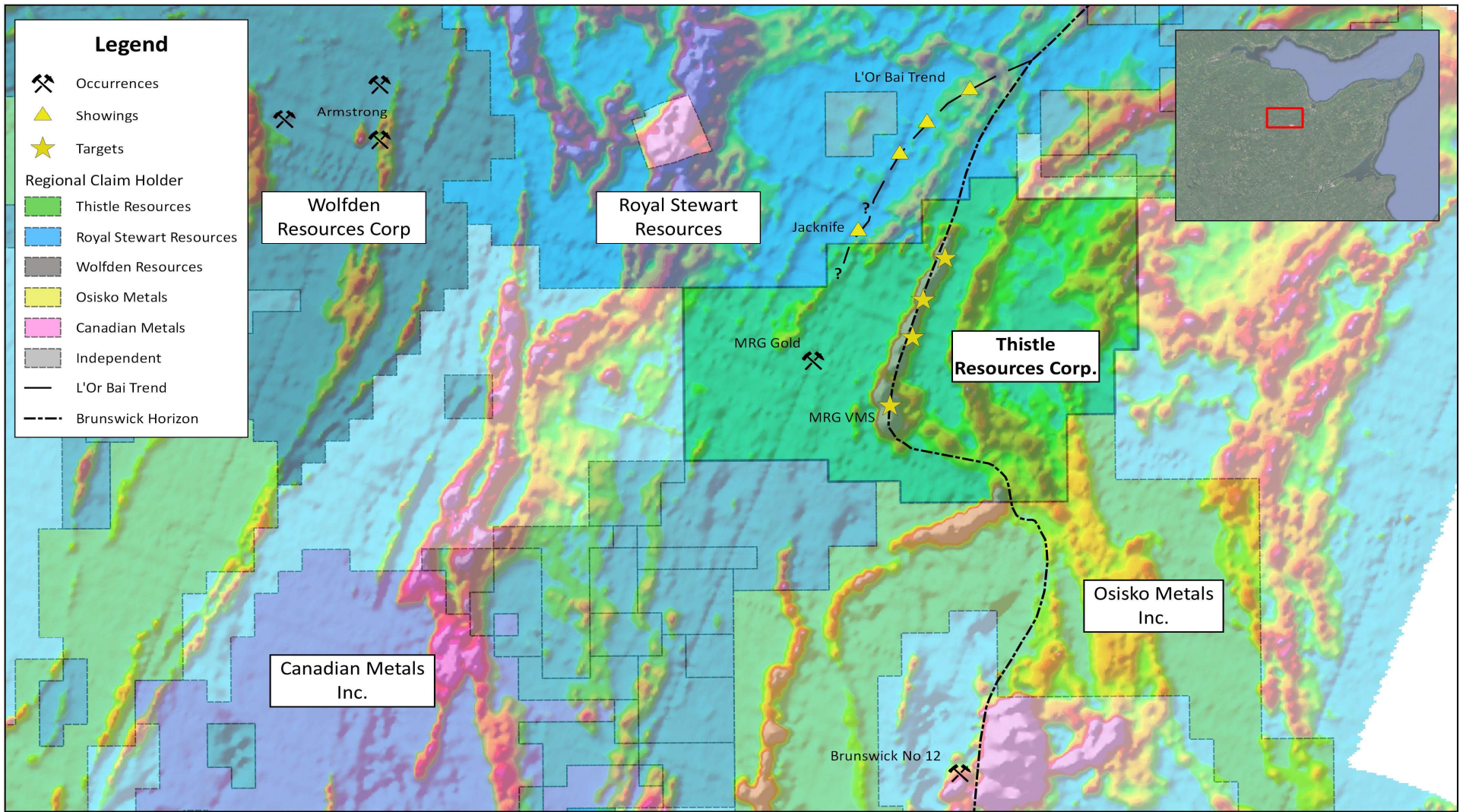
Bathurst Mining Camp



- Fraser Institute Annual Survey of Mining Companies Ranked (BMC) #2 Best Jurisdiction in Canada & #4 in the world.
- (BMC) has over 95 VMS Occurrences & 46 Deposits, & averages 1.5 new discoveries per year, since 1960.
- Of these, 25 deposits > 1MT, with an Ave 12.74 MT with grades of: 4.72% Zn, 1.78% Pb, .64% Cu, 51 g/t Ag & .54 g/t Au
- BMC is age dated to Early to Middle Ordovician Period (480-457 M Years Ago)..
- Gold Event occurred approximately 100M years ago in the Camp.
- Famous Bathurst #12 Mine produced & operated for over 51 years – 330,000,000 Tonnes
- Excellent infrastructure, including extensive highway networks, rail connections and a deep-water port at Belledune.



THISTLE RESOURCES MRG GOLD-VMS Neighbours



Thistle Resources Corp.
 Date: March 22, 2021
 Author: G.Lohman

Thistle Resources Corp.
**Bordering Claim Holdings
 and Aerodat**

Scale: 1:100,000
 Coord. System: NB Stereographic
 0 1 2 3 4 5 km



Middle River Gold Project – Gold/SIP Zones

- Structurally controlled As/Au mineralization hosted within altered sediments / volcanics of the Canoe Landing Lake Formation.
- Defined by many wide, high grade intercepts (up to 1.70 g/t over 38.3m. & 3.47 g/t over 17.6m, 2.41 g/t over 18.2m) (See proceeding slide for results table)
- Diamond drilling has traced the structure 1000m to the NE where it has seen limited surface exploration.
- The SIP gold zone is a parallel gold bearing structure 100m east of the MRG zone and associated with extensive Cr alteration +/- sulfides.
- Several unexplained geochemical gold anomalies occur NE of SIP and may represent blind gold mineralization at depth.
- Upcoming drill program NE to extend the Main MRG Gold Zone & define the poorly explored SIP Gold Zone to the East.

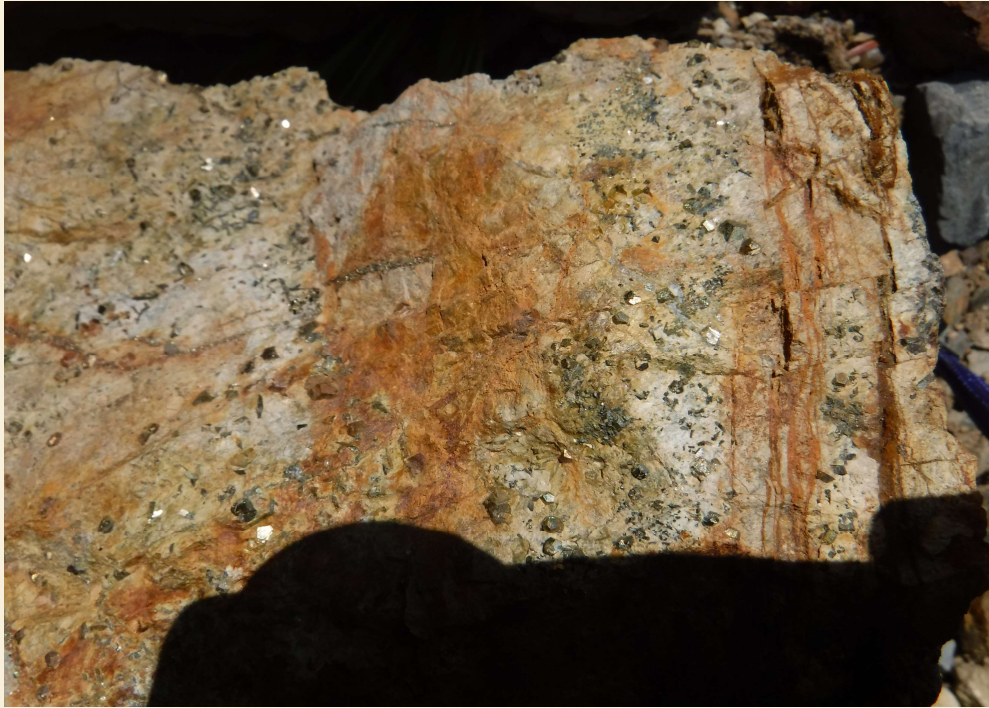


Middle River Gold Drill Results – 15 Holes

Drill Hole #	Target	Best Intersection
MR-03-001	MRG	2.35 g/t Au over 9.95m *
MR-03-002	MRG	3.80 g/t Au over 10.0m *
MR-03-003	MRG	3.47 g/t Au over 17.60m *
MR-05-004 (1)	MRG	2.59 g/t Au over 5.35m
MR-05-004 (2)	MRG	0.84 g/t Au over 2.25m
MR-05-006	MRG	6.28 g/t Au over 7.75m *
MR-05-007	MRG	3.35 g/t Au over 8.4m *
MR-05-008 (1)	MRG	9.57 g/t Au over 3.90m
MR-05-008 (2)	MRG	2.41 g/t Au over 18.2m *
MR-05-009 (1)	SIP	0.82 g/t Au over 4.5m
MR-05-009 (2)	SIP	0.92 g/t Au over 1.55m
ES--92-1	MRG	1.07 g/t Au over 23.34m *
ES-92-2 (1)	MRG	3.66 g/t Au over 10.60m *
ES-92-2 (2)	MRG	1.52 g/t Au over 20.70m *
ES-92-3	MRG	1.70 g/t Au over 38.3m *
ES-92-4	MRG	2.85 g/t Au over 27.10m *
ES-8-87	SIP	5.43 g/t Au over 4.88m *
ES-11-87	SIP	7.31 g/t Au over 3.42m
ES-14-87	SIP	12.06 g/t Au over 1.50m

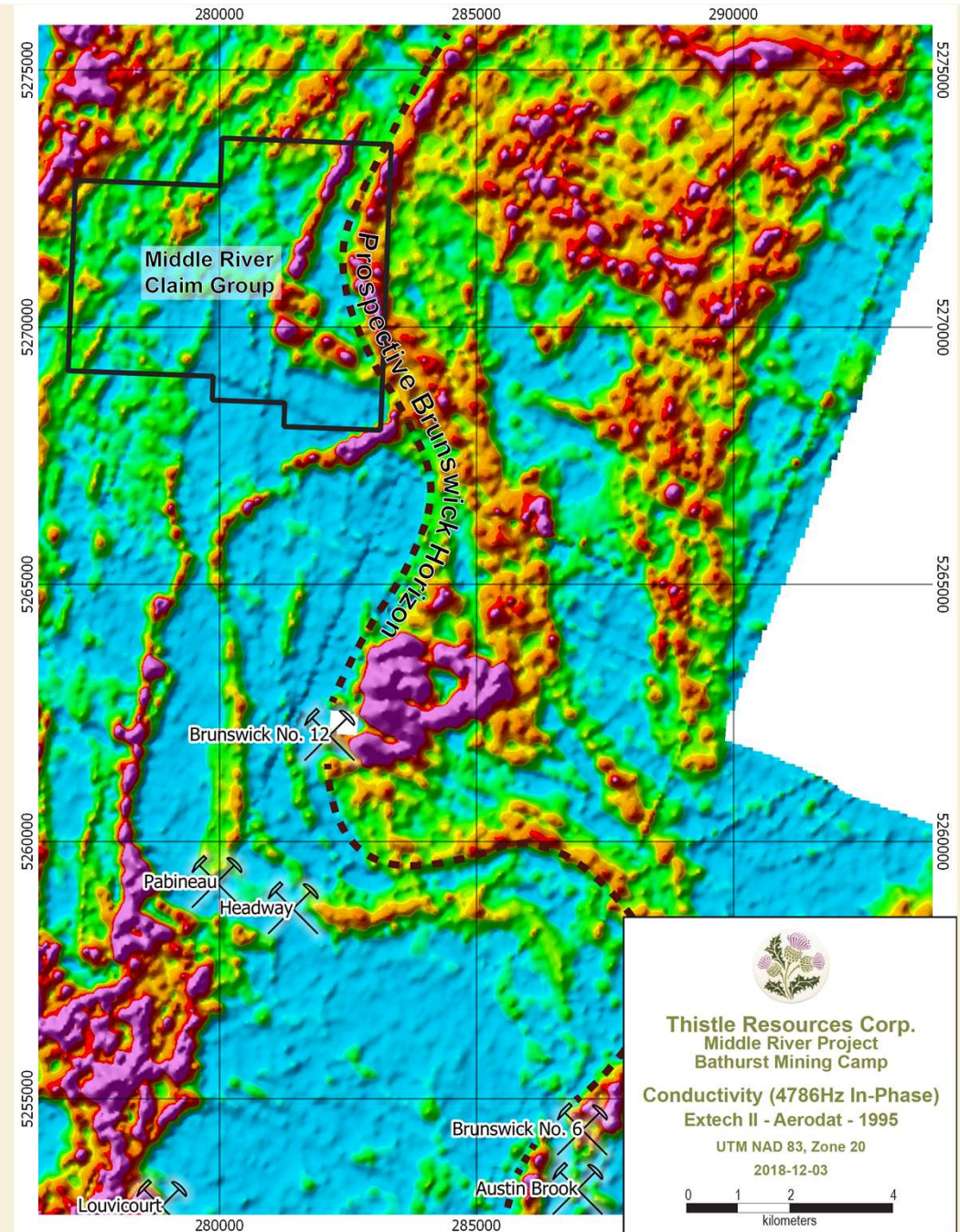


Middle River Gold Field Visit



Middle River VMS Project – Brunswick Extension Horizon

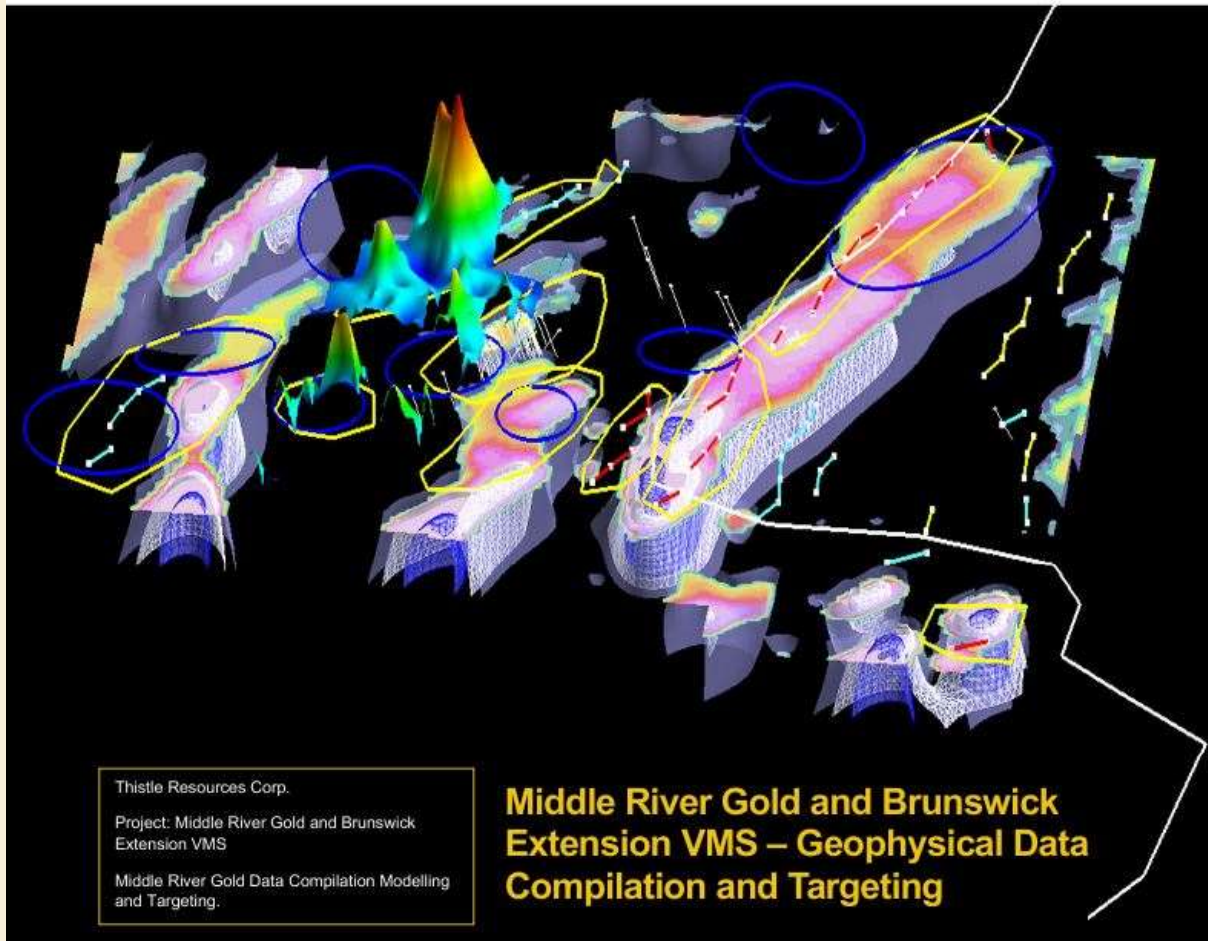
- Regional geophysics confirms good potential that the same horizon which hosts the Brunswick # 12 and Brunswick # 6 deposits extends through the eastern portion of the property.
- Anomalous base metals in soil samples within target area further highlight it's significant prospectivity.
- Only limited exploration has been carried out towards the eastern boundary, focused primarily on the strong central conductor.



EARTHEX GEOPHYSICAL DATA SOLUTIONS PROJECT

Middle River Gold & Brunswick Extension VMS
Entire Data Reprocessing – 3D Modeling - AI Analysis & Interpretation
December 20, 2020





Thistle Resources Corp.
Project: Middle River Gold and Brunswick
Extension VMS
Middle River Gold Data Compilation Modelling
and Targeting.

Middle River Gold and Brunswick Extension VMS – Geophysical Data Compilation and Targeting

Report Date	Coordinate System	Prepared By
December 2020	UTM Zone 20N – NAD83	Daniel Card P.Geo, RPGeo – EarthEx Geophysical Solutions

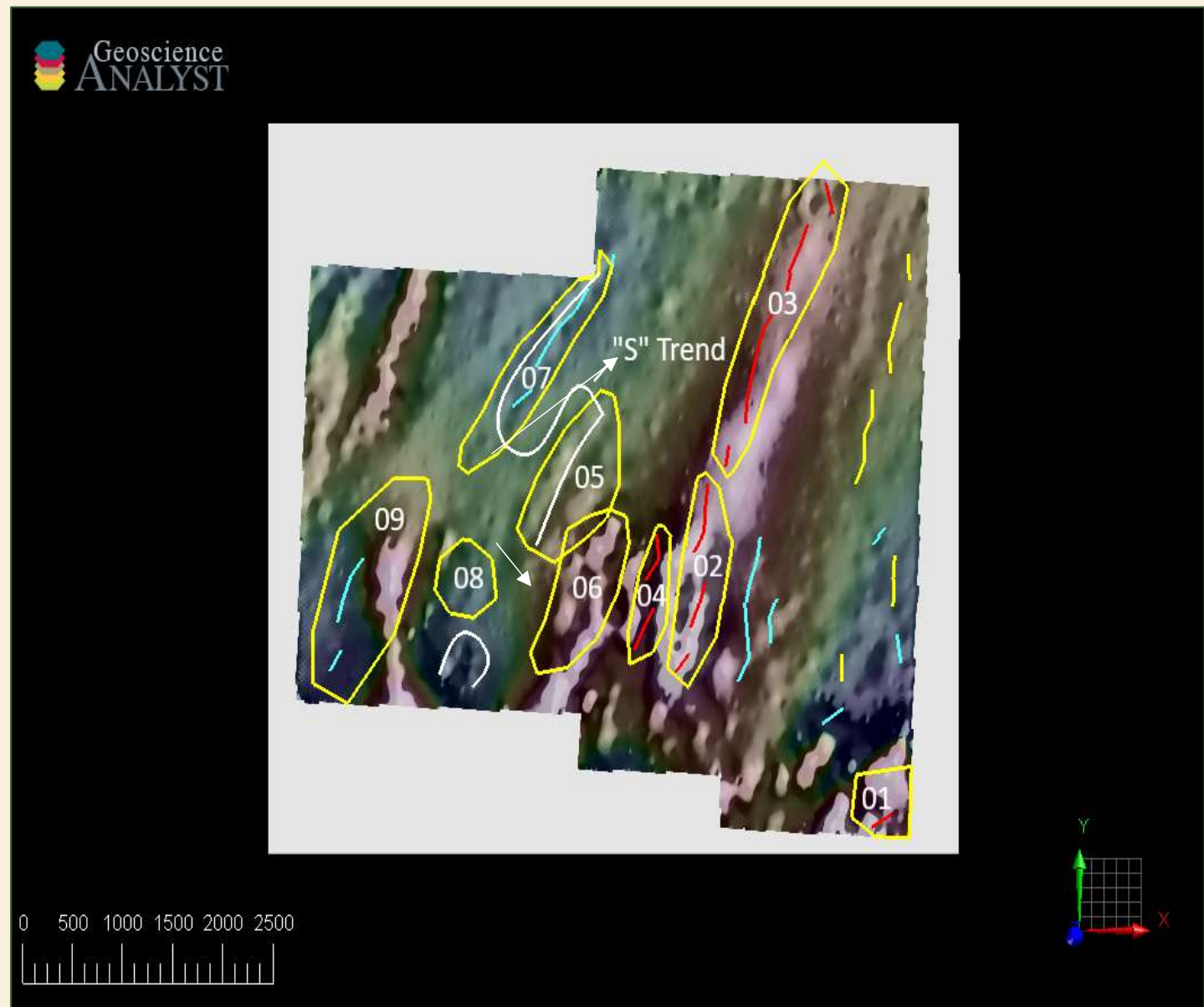


- Licences consolidated to facilitate government reporting and renewals.
- Digitization of historic diamond drilling, geochemistry and geophysical data.
- Geochemical data identified 9 base and precious metal targets throughout the project area.
- An isolated arsenic soil anomaly south of Middle River was investigated, 60+ soils collected in the vicinity. XRF analysis of soils confirming the presence of anomalous As in soil, indicating potential extension of MRG deposit to the south.
- 90 Km. of ground based VLF-EM and Magnetics completed by Vickers Geophysics Inc., Bathurst, New Brunswick.
- 3D modelling & AI Interpretation of Middle River Gold Zone and Bathurst Extension geophysical data by EarthEX Geophysical Solutions Inc. identified:
 - **5 High Priority (Au) Targets** that demonstrate the potential to expand the Middle River Gold Deposit.
 - **4 High Priority (VMS) Targets** identified along the Bathurst Extension with structural complexity and geophysical signatures consistent with characteristic BMC VMS mineralization.
- Sulphide bearing Felsic Volcanic rubble located in the southern portion of the project area.



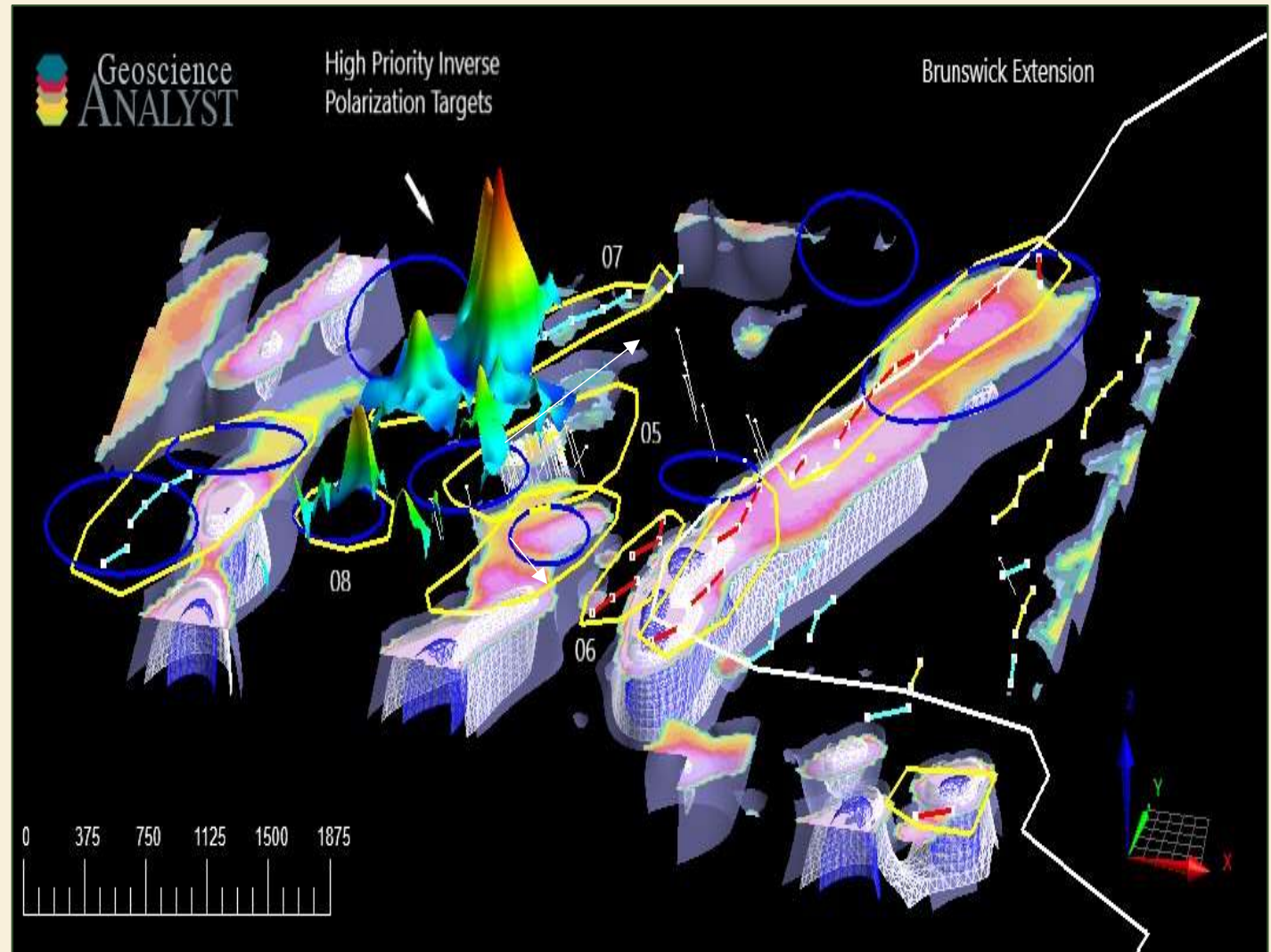
MRG Priority Targets 05 – 09 - “Structural Trends” – Faults – Folds – “S” Trend Extension

- At Middle River Gold, EarthEX Targets (05), (06), (07), (08) & (9) follow a sinusoidal pattern outlined by a series of weak to moderate magnetic anomalies, consistent with existing MRG Deposit Characteristics.
- Structural Trends have been identified, consisting of 5 folds, the geophysical signature like the original MRG deposit, providing multiple repetitions of prospective lithology and the potential to significantly expand the existing deposit.



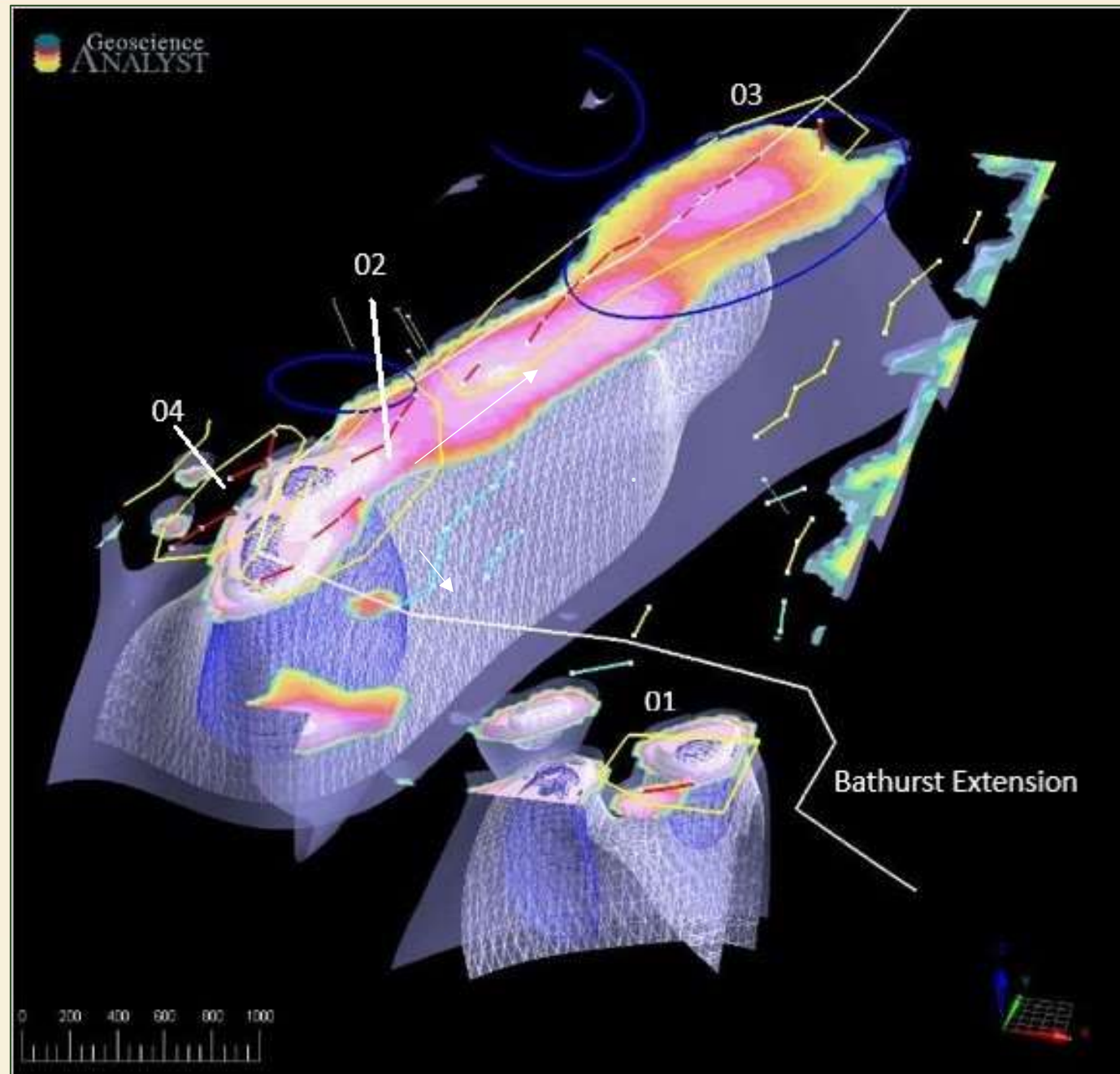
MRG Gold Deposit – High Priority Inverse Polarization Targets

- The EarthEX High Priority Inverse Polarization Targets Analysis shows a direct response over the current MRG Deposit (05) and a greater pronounced response over Target (07) & (08), characteristic of hydrothermal alteration typically seen in these types of deposits, the sinusoidal trend possibly due to folding of the stratigraphy.
- The Targets appear connected by a sinusoidal magnetic trend due to the repetitive folding of the stratigraphy, the greater responses at Targets (07) & (08) displaying the implied potential to significantly expand the current MRG Gold Deposit (05) along the “S” Trend Strike, resulting in a significant additional Au bearing deposit



Bathurst Extension VMS – EarthEX GeoPhysical Priority Targets

- On the Eastern Flank of the Property, the BMC “Brunswick Extension” is defined by a series of strong conductive responses coincident with a 3-km distinct magnetic trend, reflective of massive sulphide mineralization.
- The Trend is overlying favourable BMC Stratigraphy, the Magnetics are continuous, extremely strong, trending & dipping Northeast.
- Target (01) lies in an area of magnetic complexity and is defined by strong conductive responses at depth, along the flank of the Horizon.
- Targets (02) and (03), follows the 3-km magnetic northeast trend, consisting of locally truncated conductors, consistent with existing BMC VMS Deposits.
- Target (04) lies in an area of structural complexity on the western flank of the massive conductive body and a major structural feature, making this area the highest priority, the structural deformation is an ideal location for traditional massive sulphide deposits.
- EarthEX’s Proprietary AI & 3D Analysis has confirmed the long eluded “Brunswick VMS Extension”. The Priorities to drill are (02-04) , (03), & (01).



- EarthEX has identified & confirmed the relationship between the known gold mineralization and the magnetics at the Middle River Gold Deposit.
- Significant extension to the deposit is along strike and at depth. Multiple target zones should lead to additional discoveries along the “S-Trend”
- High-Definition UAV Drone Magnetics is recommended at targets (05 – 08) to define the magnetic “S” Trend & depth of entire target area including the known deposit.
- This is to be followed by a Ground I.P. Survey which will identify concentrations of sulphides along the S - Trend, providing priority drill targets.
- EarthEX identified & prioritized the strength of the magnetic conductors that were detected in the 3D Modeling & Re-Processing Analysis of the airborne MegaTEM data. The Trend runs North, dipping deeper.
- A ground based Electro-Magnetic survey is recommended to define robust drilling targets along the Bathurst Extension concentrating on Targets (01 – 04)



Thistle Resources Corp. – 2021 Work Program

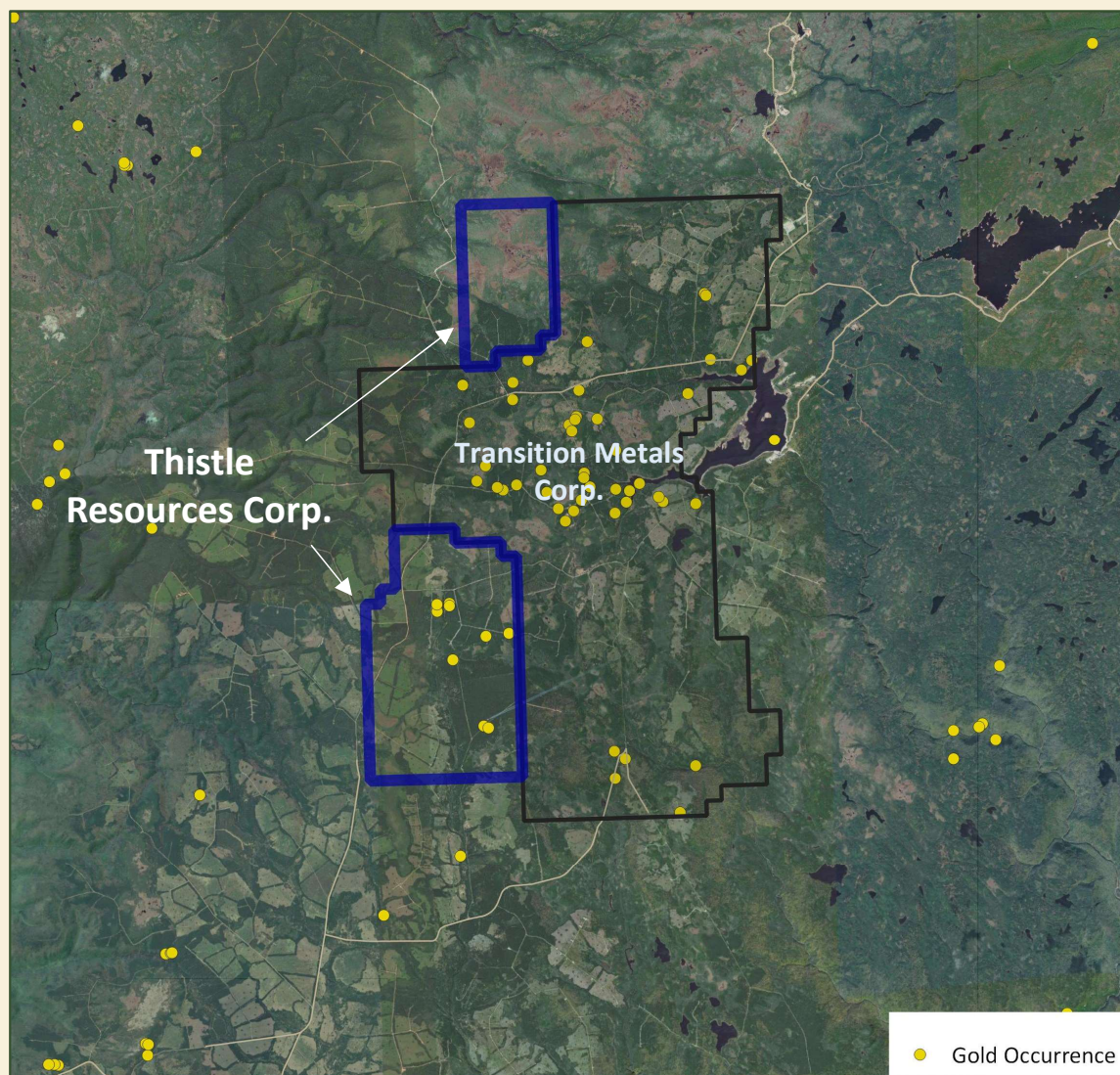
- Rock Properties to be determined by EarthEX to optimize geophysical survey parameters.
- UAV Magnetics over Middle River Gold to define geology and subsurface magnetic trend.
- Ground I.P over the gold deposit to highlight the concentration of sulphides characteristic of the gold mineralization.
- UAV Magnetics and Electromagnetics over Priority Targets along the Bathurst Extension.
- Trenching of Priority Targets.
- Diamond drilling, including:
 - 1600m - 2400m testing the Blind VMS model in the NE of the property.
 - 1200m - 1600m testing Middle River gold structure along strike, down plunge and infilling gaps.

	Description	Budget
Rock Properties	Magnetic Susceptibility, Chargeability and Resistivity to be Quantified	\$2,500
Geophysics Middle River Gold	UAV Magnetics and Induced Polarization (I.P.)	\$50,000
Geophysics Bathurst Extension	UAV Magnetics and Electromagnetics along the Magnetic Horizon	\$ 50,000
Trenching/Till Sampling	3-4 trenches or Basal Till sample lines over Blind VMS and Middle River Gold Deposit extensions	\$20,000
Prospecting	10-man days, property wide	\$5,000
Geochemistry	Portable XRF analysis of drill core and rock samples	\$5,000
Diamond Drilling	Four (4) – Six (6) Drill holes, (3-400 m each), targeting Blind VMS	\$400,000
Diamond Drilling	Six (6) to Eight (8) Drill holes, 100-200m each, @ Middle River Gold ext.	\$300,000
Miscellaneous	Housing, meals, travel, contingency	\$67,500
	Total:	\$900,000



Celtic Highlands Gold Project – Cape Breton

- Prospective region with over 40 gold occurrences recorded from sampled boulders and exposed bedrock.
- All occur throughout an area of ~75km², adjacent to and within Thistle's claims.
- The Geoscience & Mines Branch of the Nova Scotia Government is actively researching this area as a potential IOCG system.
- Work includes mapping and lithochemical analysis. The results of this work will aid in geological interpretation and targeting within Thistle's claims.
- Active area with ongoing advanced exploration from industry.
- **Borders on Transition Metals' Highland Gold Project, where bedrock samples from a parallel structural trend which underlies Thistle's property have assayed up to 104 g/t gold. Recent drill results include 4.0 m assaying 16.15 g/t Au (News Release July 15, 2019).**



- Samples collected by Thistle Geologists in areas of historic trenching
- Rusty quartz vein material collected from Zone 17 trenches with minor Pyrite.
- Zone 18 veining showed evidence of multi-stage mineralizing events, with abundant Pyrite and Chalcopyrite
- Elevated tungsten often associated with large deep-seated felsic intrusions which could suggest a larger mineralizing system at depth.

Trench	Sample	Gold (g/t)	Silver (g/t)	Tungsten (g/t)
Zone 17	CB2	0.059	1.2	< 4
Zone 17	CB3	0.211	2.4	< 4
Zone 18	CB4	0.131	2.3	< 4
Zone 18	CB5	1.529	29.7	> 200
Zone 18	CB6	0.757	17.7	16
Zone 18	CB7	6.827	92.0	54



Mineralized quartz vein from Zone 18 trench area

Assay results – Samples from August 2019 field visit



Celtic Highlands Gold Project – Cape Breton (Assay Results)

- Additional samples collected during 2019, 2020 & 2021.
- Along with high gold, silver and tungsten, elevated Molybdenum, Platinum, Palladium and Beryllium (2020) also occur.
- The multi-element results indicate the presence of a Gold system on the property, the priority being the Zone 18 Trench where sampling in 2020 confirmed 5.337 g/t Au, 52 g/t Ag and elevated Tungsten.
- Follow up work required to determine the significance of these elements within the system.



Sample	Gold (g/t)	Silver (g/t)	Tungsten (ppm)	Molybdenum (ppm)	Platinum (ppb)	Palladium (ppb)
CB8	0.190	3.9	6.6	26	<3	<2
CB9	1.461	7.4	2.8	2	<3	<2
CB10	2.438	32.7	77.2	1.2	264	120
CB11	0.149	2.6	22.8	22.2	<3	<2

Assay results – Samples from November 20 field visit



Celtic Highlands Gold Project – Assay Results

- Assay results continue to confirm the presence of a gold / silver precious metal system with gold values up to 5.337 g/t Au and 52.0 g/t Ag, sample 20CG0023, Trench area 18.
- The gold is predominantly found within samples of oxidized quartz veins that contain <1 to locally 10% pyrite and minor fine disseminated chalcopyrite.
- The sulphides appear related to a later stage grey quartz event, the pyrite occurring as secondary euhedral crystals, masses, stringers and occasional weathered boxworks.
- Multi-stage quartz veining / veinlets is common along with open vugs as seen in sample 20CG0023.
- Multi-element geochemistry has confirmed the presence of a hydrothermal system with Ag, W, Mo and Be present in the 2020 sample set.
- Wallrock breccia observed at Trench area 18 further supports an active depositional system.
- The results are significant, occurring in an area where the geophysical signatures closely mimic that of the drilled mineralization on Transition Metals property immediately to the north.

Sample	Gold (Au) (g/t)	Silver (Ag) (g/t)	Tungsten (W) (ppm)	Beryllium (Be) (ppm)
20CG0001	1.093	22.7	8	<1
20CG0002	1.258	31.0	12	<1
20CG0003	1.625	34.6	30	<1
20CG0004	0.074	1.40	<4	<1
20CG0005	0.332	9.70	24	<1
20CG0006	0.185	6.20	46	<1
20CG0007	0.253	8.10	44	<1
20CG0008	0.656	20.0	65	165
20CG0009	0.136	4.30	36	<1
20CG0020	0.318	17.1	>200	<1
20CG0021	0.835	22.4	9	94
20CG0022	0.626	8.10	25	<1
20CG0023	5.337	52.0	95	<1

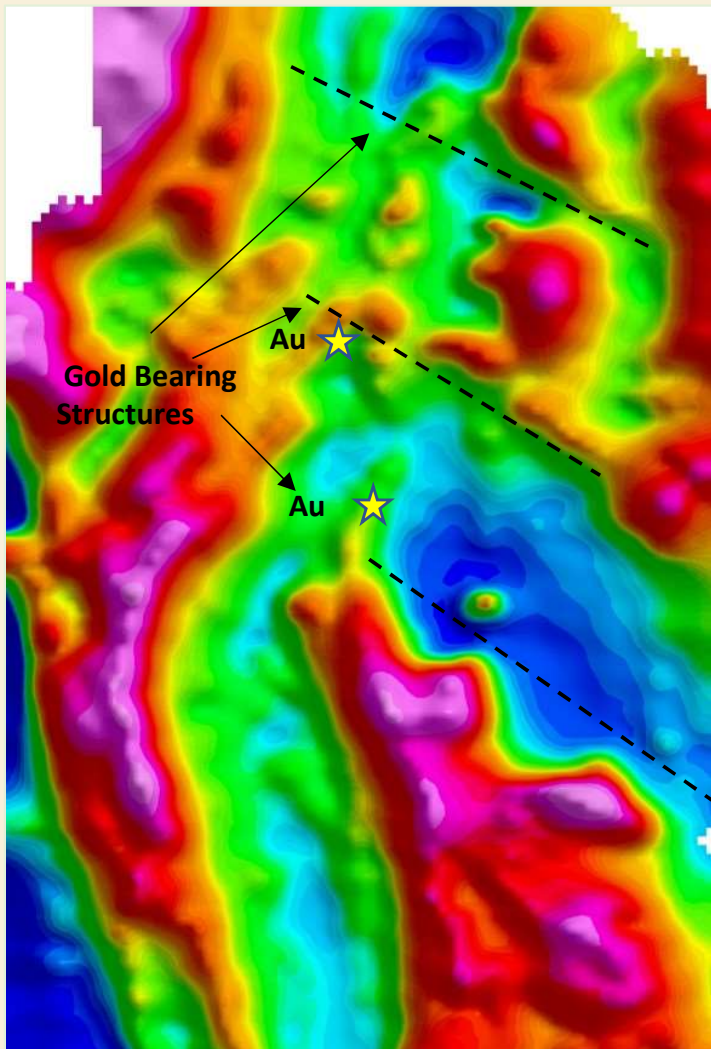




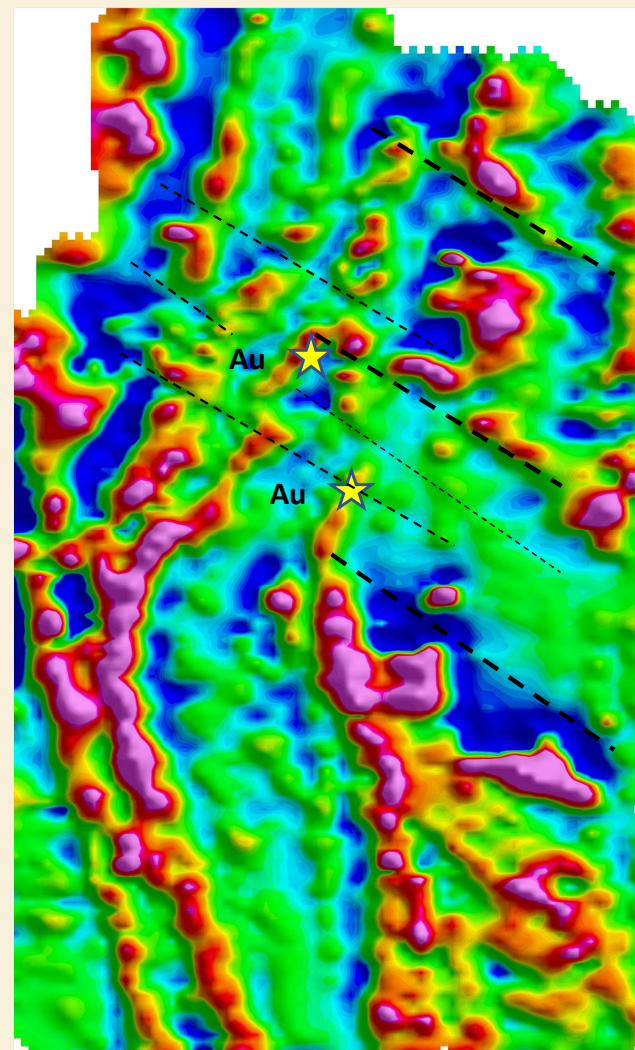
Sample 20CG0023 – Vuggy, oxidized quartz vein with boxwork pyrite.
5.337 g/t Au, 52 g/t Ag, 95 ppm W.



Sample 20CG0003. Oxidized quartz vein with abundant pyrite
1.625 g/t Au, 34.6 g/t Ag, 30 ppm Tungsten



Residual Magnetic Intensity (RMI). Major Gold bearing structural features near parallel to similar structures successfully drilled by Transition Metals.



First Derivative (RMI). Further processing of the RMI provides more detail, revealing additional parallel structures that require exploration.

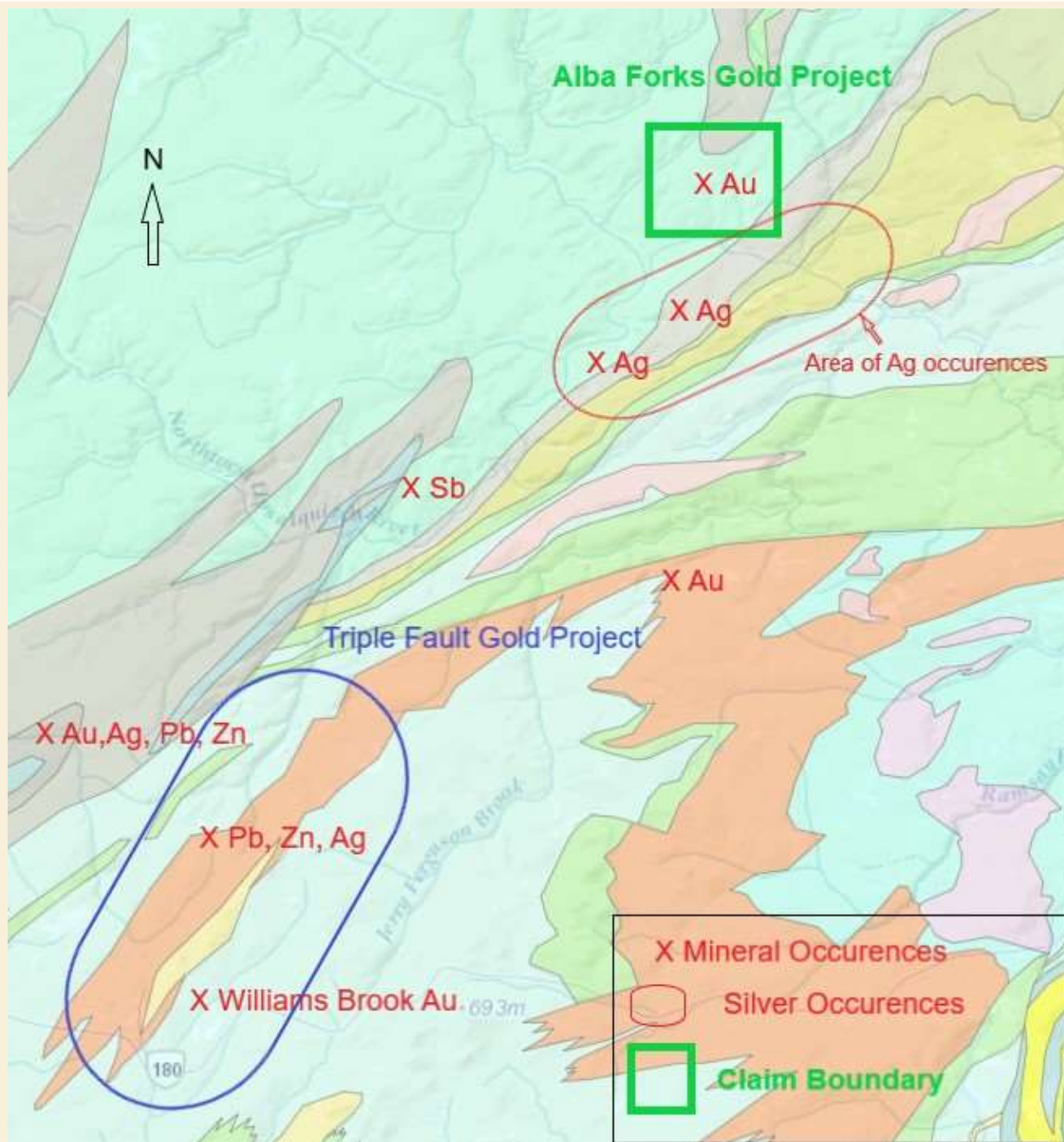
Celtic Highlands Gold Project – Cape Breton – Next Steps

- Compilation of historical geology, geophysical and geochemical data to define high priority target areas within the property – **Completed.**
- Initial prospecting and extensive UAV Magnetic Survey to identify zones of pervasive silicification (magnetite destruction in mafic host rocks) – **Completed.**
- Reprocessing of UAV magnetic data / infill UAV lines to better define targets –
- Lineation study using digital topographic data to delineate major structures and quartz veins – **In Process.**
- Trenching over anomalous zones to expose auriferous quartz veins for mapping, characterization and sampling.

	Description	Budget
Prospecting/Sampling	10 - man days, property wide	\$15,000
Geophysics	UAV Magnetic Survey reprocessing / Data Acquisition	\$45,000
Data Compilation/Interpretation	Historic data compilation and analysis	\$10,000
Trenching	2 Trenches	\$15,000
Miscellaneous	Housing, meals, travel, contingency	\$15,000
	Total:	\$100,000



Alba Forks Gold - Occurrences



Alba Forks Gold Project, New Brunswick (Upcoming Work Program)

- Compilation of historical geology, geophysical and geochemical data to define high priority target areas within the property – **(Currently Underway)**
- Initial prospecting and deep soil/basal till sampling to identify prospective targets for trenching.
- Trenching over anomalous zones to expose auriferous targets for mapping, characterization and sampling.
- Drone Aerial Survey
- XRF Analysis – Float – Boulders – Rock & Soil Sample Analysis
- Lineation study using digital topographic data to delineate major structures.

	Description	Budget
Prospecting/Sampling	20 - man days, property wide	\$30,000
Analytical	XRF analysis / Heavy mineral screening	\$15,000
Data Compilation/Interpretation	Historic data compilation and analysis	\$10,000
Miscellaneous	Housing, meals, travel, contingency	\$15,000
	Total:	\$70,000



Patrick J. Cruickshank, MBA, **President & CEO**

Mr. Cruickshank is the Founding – President & CEO of Thistle Resources Corp.

Mr. Cruickshank, received his MBA at Canada's Highly Prestigious York University – Schulich School of Business. Patrick brings a wealth of experience from the Private Wealth Management Sector, Protecting & Managing Wealth for over 15 years @ Merrill Lynch, Citigroup Capital Markets, Smith Barney and Legg Mason to name just a few. Patrick was an NFLPA Financial Advisor for over a decade helping financially educate, wealth creation & Long-term wealth preservation strategies for NFL Professional Players and their families.

Mr. Cruickshank also serves on the Boards of:

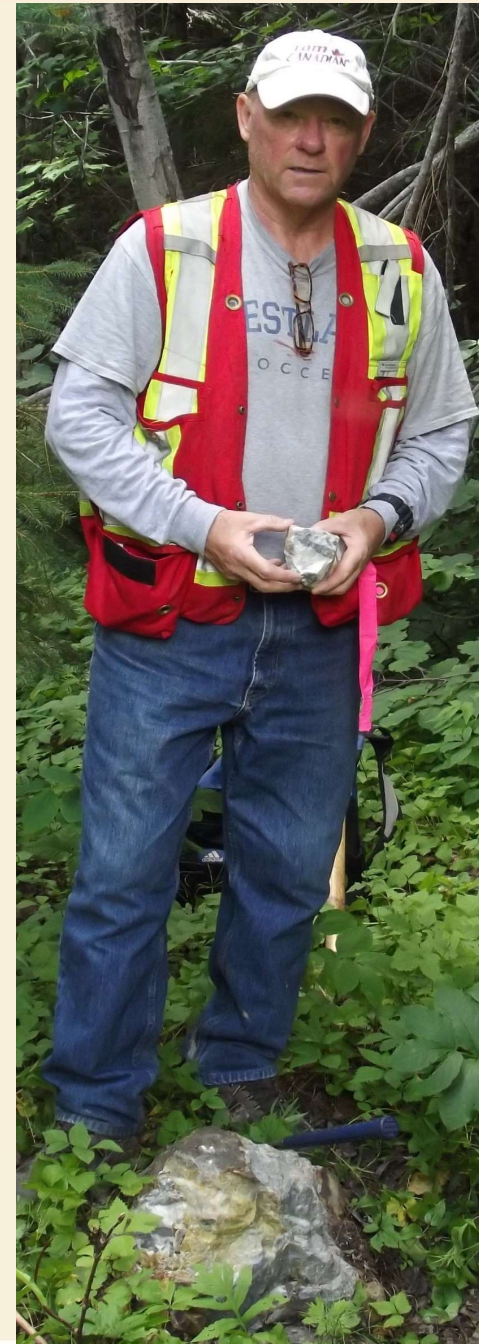
Atacama Copper Exploration (Canada & Chile)
Fiddlehead Mining Corp (NB, Canada)

Royal Stewart Resources Corp. (NB, Canada)
Minotaur Atlantic Exploration Ltd (NS, Canada)

Mr. Cruickshank specializes in establishing and growing companies, driving shareholder value through a long-term business strategy from inception to growth to exit. Mr. Cruickshank is often invited to speak @ Resource Summits in Canada, Chile, Peru, London & Germany. Patrick is an active Panel Guest Speaker of the Toronto Stock Exchange Venture (TSX-V) & the Santiago Stock Exchange (SSE) Industry Events. Mr. Cruickshank is frequently interviewed on Radio Show & Industry Publications within the Resource Sector.

Mr. Cruickshank, is a Former Canadian Olympic/U23 Soccer Player and US NCAA D1 Collegiate Player. Patrick is also a very highly decorated US & Canadian Coach, from being a Professional Soccer Player to coaching Canada's Women to University of Mississippi to US Olympic Development Staff Coach. Patrick holds his US Soccer "A" License & Canadian National Coaching Licenses.

Patrick now enjoys coaching soccer to his 6 children..



Gary Lohman, B.Sc., P.Geo

COO & SVP Director of Exploration

Mr. Lohman is a Founder and Chief Operating Officer of Thistle Resources Corp. As an exploration geologist, he has 40 years of experience in both precious and base metal exploration within the Americas Management experience within and outside of the mining industry.

Skilled in geological, geochemical and geophysical exploration techniques in a wide variety of settings including Volcanogenic Massive Sulphides (VMS), Porphyry & IOCG (Copper/Gold) Style Deposits. Experience includes evaluations / research conducted on bonanza grade and bulk tonnage gold-silver properties in Canada, Mexico, California, Ecuador & Chile. Evaluated and conducted research on a variety of Industrial mineral projects including graphite, titanium, zeolites and building stone.

Mr. Lohman is also the President of Atacama Copper Exploration Limited in Chile. A Private Canadian Exploration Company focused on Large Scale IOCG – Cobalt Exploration.

Gary also holds several Board Positions:

Atacama Copper Exploration Limited, Minotaur Atlantic Exploration Limited,
Royal Stewart Resources Corp & Fiddlehead Mining Corp.

Gary is based in Bathurst, New Brunswick throughout the year, conducting exploration in addition to working with various agencies within the provincial government including the Department of Mines and Forestry.





DANIEL CARD, P.GEO, RP.GEO EARTH EX GEOPHYSICAL SOLUTIONS INC.

EarthEX Geophysical Solutions Inc was founded in 2014 in Selkirk, Manitoba, Canada by its Chief Geophysicist, Daniel Card. Mr. Card, P.Geo, RP.Geo, a professional Geophysicist, holds a BSc. Honours Degree from the University of Manitoba and is currently registered in Canada and Australia.

His career started with Xstrata (now Glencore) where he worked his way up to Project Geophysicist at Raglan Mine in northern Quebec, and then went on to serve at Xstrata's Western Australian operations Cosmos and Sinclair in the Leinster-Wiluna nickel camp, where he played a key role in the discovery and definition of the 9 MT Odysseus Nickel Sulphide Deposit, which is soon going into production for Western Areas Ltd.

Following his tenure at Xstrata, he went on to work as Senior Geophysicist for Southern Geoscience Consultants in Perth, WA, where he served as the staff electromagnetics specialist. He also served as the technical lead on many mineral exploration projects. He continued as a senior technical consultant to Abitibi Geophysics and an expert peer reviewer for the journal "Exploration Geophysics".

At EarthEX, we are specialized in geophysical prospecting, data interpretation, 3D modelling and target definition for hard-rock minerals. We work with cutting edge technologies and data analysis methodology.

In the search of all mineral commodities for projects across the globe, Daniel has worked extensively with geophysical data of all varieties. Particularly, unique experiences that he holds close to the heart include; training local scientists in the use of geophysical equipment in the VMS regions of Eritrea, and an internship at NASA's Lunar and Planetary Institute where he analyzed ground penetrating satellite radar data from Mars' polar regions.

Since its inception, EarthEX has gained widespread recognition for its scientific accomplishments for its clients & partners.

Matthew R. Pitts, P. Geo. SVP of Exploration

Matthew is a senior exploration geologist with over 7 years' experience spanning multiple continents and deposit types.

Most recently, Matthew was the Senior Project Geologist for Trevali Mining Corporation's New Brunswick exploration team, where he oversaw the company's mineral exploration and resource expansion activities in the highly prolific Bathurst Mining Camp. During his 5+ years with Trevali, Matthew either led or was directly involved in several successful exploration programs including new discoveries at the Stratmat, Halfmile, and Caribou Deposits, and significant resource definition/conversion programs at the Stratmat, Heath Steele, Halfmile, Caribou and Restigouche deposits. As part of the companies continued growth in New Brunswick and abroad, Matthew was heavily involved in the compilation, quality control and comprehensive review of historic datasets in order to progress commissioning at the Caribou and Restigouche Mines, and assess potential brownfield and greenfield exploration opportunities.

Prior to joining Trevali, Matthew led several greenfield-diamond drilling exploration programs searching for Archean greenstone Gold deposits in the tropical rainforests of Guyana, South America.

Matthew is fluent in a host of GIS and geological modelling software including MapInfo, QGIS, ArcGIS, LeapFrog Geo and Discover3D. Matt graduated with a Bachelor of Sciences (Geology) from Acadia University, Wolfville, NS in 2011.



Michael O. Jaynes, B.Sc., P. Eng., , **Environmental Eng & Technical Advisor**

Mr. Jaynes received his B. Sc. in Chemical and Petroleum-Refining Engineering from the highly acclaimed Colorado School of Mines in 1991. Mr. Jaynes is a licensed Professional Engineer (in Florida, Mississippi, and Texas) with over 28 years of experience in environmental engineering including contamination assessment, remedial investigations, feasibility studies, remedial system design and implementation, and project management. His experience includes preliminary assessments, site investigations, well drilling and direct-push technology oversight, groundwater, surface water, sediment, and soil sampling, landfill studies, aquifer characterization, site inspections, and general construction oversight.

Mr. Jaynes' expertise is in remedial system design, installation and construction oversight, system monitoring, operation and maintenance, underground injection remedies, and comprehensive environmental response. Mr. Jaynes' experience includes work at industrial sites, RCRA landfills, U.S. Naval Facilities, underground storage tank/petroleum sites, commercial drycleaner/chlorinated solvent sites, U.S. Coast Guard Facilities, Targeted Brownfields sites, and National Priority List (NPL) Superfund sites. Mr. Jaynes, who played both D2 soccer and baseball in college, is also a licensed USSF soccer coach with 12 years of club coaching experience and currently coaches high school soccer in Austin, Texas.

Mr. Jaynes lives with his wife, Kaye, and their daughter Evan, in Lakeway, Texas.



Team Structure

Patrick J Cruickshank, MBA
President & CEO, Director
Chairman of the Board

York Univ. – Schulich School of Business (MBA)

Gary Lohman, B.Sc., P. Geo.
Director of Exploration & COO, Director
Technical Advisory Committee
University of Toronto

Daniel Card, B.Sc., P.Geo, RP.Geo
Technical Advisory Committee
Univ. of Manitoba

Matthew R Pitts, B.Sc., P.Geo
SVP of Exploration
Acadia University – Nova Scotia

Michael O. Jaynes, B. Sc., P. Eng, C.P.R.
Environmental Engineer
Technical Advisory Committee
Colorado School of Mines, Co

Legal Counsel: Fogler, Rubinoff LLP
(Toronto, Ontario)

Legal Counsel: Byrne, Lenihan
(New Brunswick)

Thistle Resources Corp.
91 King St E., Suite #111, Bowmanville, ON, L1C 5E2
613-900-9722 Tel



**PATRICK J. CRUICKSHANK, MBA
PRESIDENT & CEO**

patrick@thistleresources.com
506-804-6117

**GARY LOHMAN, P. GEO
DIRECTOR OF EXPLORATION, COO**

gary@thistleresources.com
905-299-8552



Canada 

