



*** THISTLE RESOURCES CORP. ANNOUNCES ***
PUBLIC TRANSACTION PENDING

Thistle Resources Corp.

PRECIOUS METALS & CRITICAL MINERALS EXPLORATION



Technical Review – July 15th, 2023



Precious Metal and VMS Exploration
Bathurst Mining Camp, New Brunswick, Canada
Cape Breton Highlands, Nova Scotia, Canada



The opinions, estimates, and/or projections contained herein are those of Thistle Resources Corp. as of the date thereof and are subject to change without notice. Thistle Resources makes every effort to ensure the contents contained herein have been compiled or derived from sources believed reliable and contain information and opinions, which are accurate and complete. However, Thistle Resources makes no representations or warranty, express or implied, in respect thereof, takes no responsibility for errors or omissions which may be contained herein and accepts no liability whatsoever for information and its contents. The information contained herein is not to be construed as an offer to sell or solicitation for an offer to buy any securities.

The officers, directors or employees may from time to time acquire, hold or sell securities mentioned herein.



Summary of Projects

- **Thistle Resources Corp.** (Thistle) is a Private Canadian junior Exploration Company focused on *Base and Precious Metal Exploration* in the Bathurst Mining Camp, New Brunswick, and the Cape Breton Highlands Region, Nova Scotia, Canada. Thistle Resources Corp. has 4 Major Projects; (Middle River Gold), (Middle River VMS), (Celtic Highlands Gold) & (Alba Forks Gold).
- The **Bathurst Mining Camp (BMC)** is one of the top 3 Volcanogenic Massive Sulfide (VMS) mining districts in the world and has more than 46 known VMS deposits totaling > 475,000,000 tonnes.
- **The Middle River Property (BMC)** consists of two major projects, **Middle River Gold** and **Middle River VMS**.
- **The Middle River Gold Project** consists of two major prospects, the Middle River “Gold Zone” (MRG) and The Middle River “SIP Zone”. High Grade results over great widths...
- **The Middle River VMS Project** is located along the eastern flank of the Tetagouche Group Formation which hosts the Brunswick #6 & #12 Deposits to the south. The VMS Horizon is displayed by the 1995 Regional BMC EM Survey (Slide #6) & recent geophysical analysis projects the VMS Horizon through the Middle River Property and onto the Royal Stewart Resources’ Lor Bai Project to the north.
- **The Celtic Highlands Gold Project (Cape Breton)** is located within a 75km² area containing more than 40 known gold occurrences. (Surrounding Transition Metals “Highland Gold” Project). The Cape Breton Highlands is underlain by rocks of the Avalon Terrain, known to host both Orogenic (Mesothermal) and Epithermal gold mineralization.
- **The “Newly Acquired” Alba Forks Gold Project (BMC)** is located along the north side of the Upsalquitch River, approximately 75 kms west of Bathurst NB, along the northwest flank of the spectacular Bathurst Mining Camp (BMC). The project area lies along the flank of the northeast trending sedimentary-volcanic contact that hosts numerous Gold/Silver mineral occurrences with Lead & Zinc.



PROJECTS

Alba Forks Gold Project



Brunswick Horizon

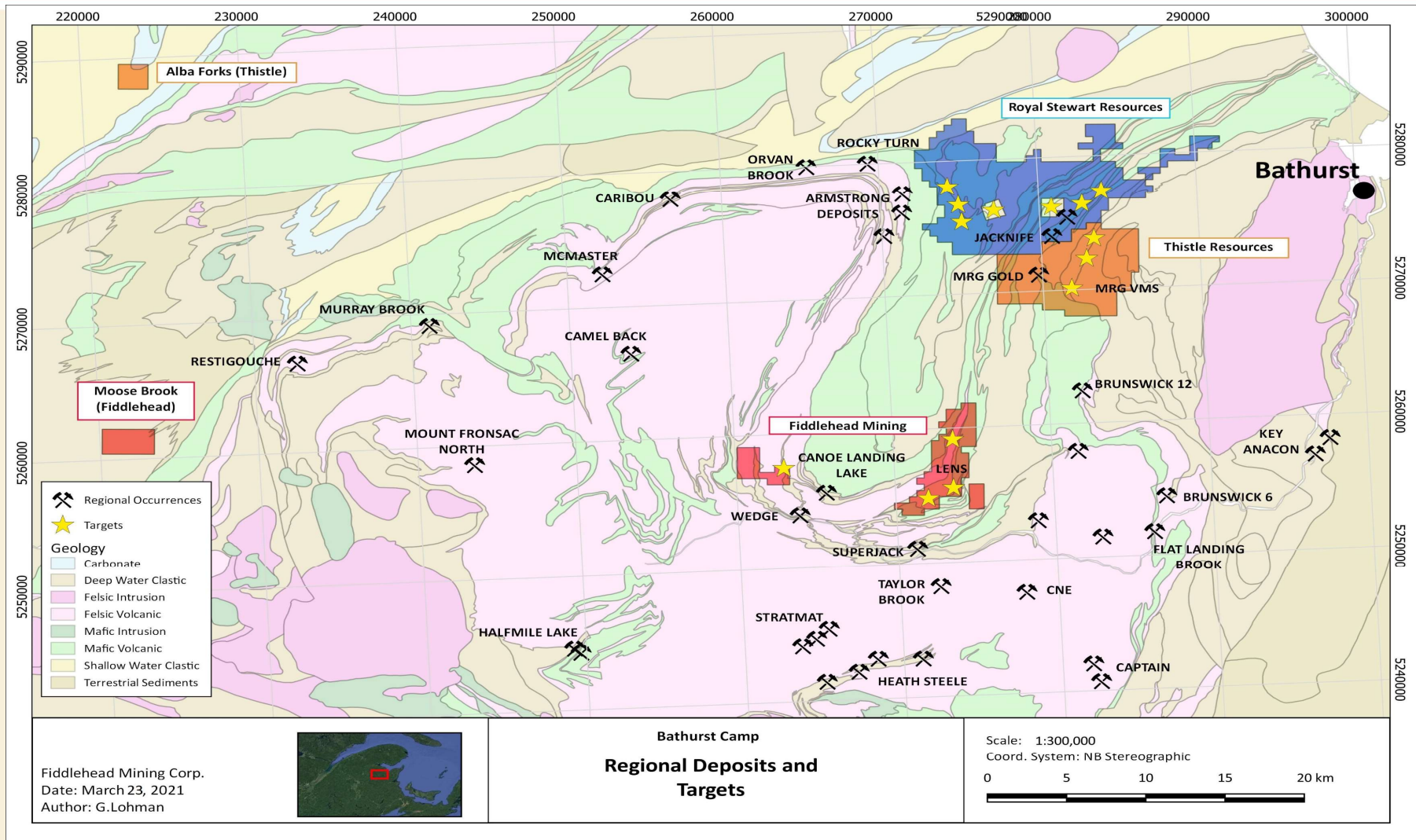


Middle River Gold Project

Celtic Highlands Gold Project



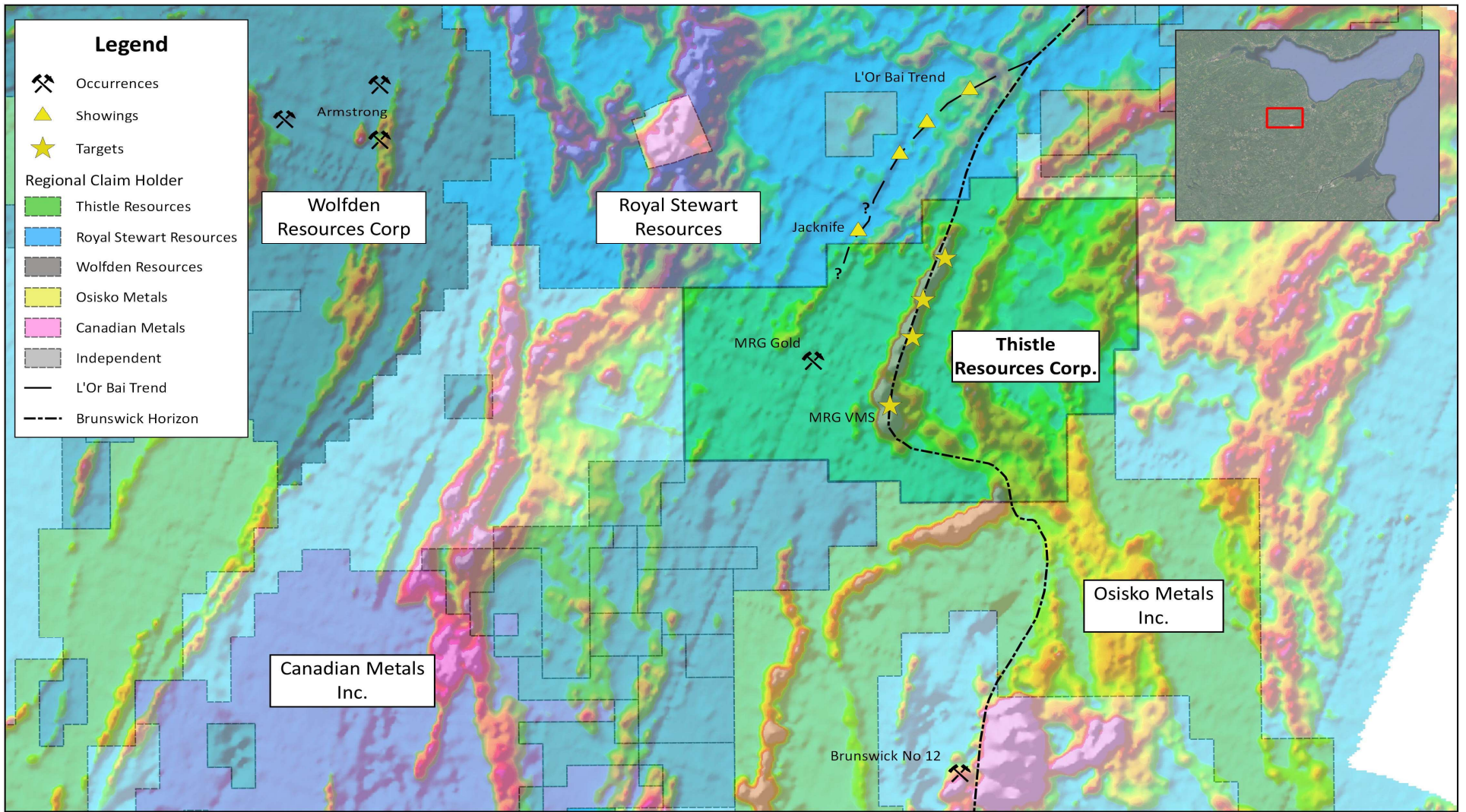
Bathurst Mining Camp



- Fraser Institute Annual Survey of Mining Companies Ranked (BMC) #2 Best Jurisdiction in Canada & #4 in the world.
- (BMC) has over 95 VMS Occurrences & 46 Deposits, & averages 1.5 new discoveries per year, since 1960.
- Of these, 25 deposits > 1MT, with an Ave 12.74 MT with grades of: 4.72% Zn, 1.78% Pb, .64% Cu, 51 g/t Ag & .54 g/t Au
- BMC is age dated to Early to Middle Ordovician Period (480-457 M Years Ago)..
- Gold Event occurred approximately 100M years ago in the Camp.
- Famous Bathurst #12 Mine produced & operated for over 51 years – 330,000,000 Tonnes
- Excellent infrastructure, including extensive highway networks, rail connections and a deep-water port at Belledune.



THISTLE RESOURCES MRG GOLD-VMS Neighbours



Thistle Resources Corp.
 Date: March 22, 2021
 Author: G.Lohman

Thistle Resources Corp.
**Bordering Claim Holdings
 and Aerodat**

Scale: 1:100,000
 Coord. System: NB Stereographic
 0 1 2 3 4 5 km



Middle River Gold Project – Gold/SIP Zones

- Structurally controlled As/Au mineralization hosted within altered sediments / volcanics of the Canoe Landing Lake Formation.
- Defined by many wide, high grade intercepts (up to 1.70 g/t over 38.3m. & 3.47 g/t over 17.6m, 2.41 g/t over 18.2m) (See proceeding slide for results table)
- Diamond drilling has traced the structure 1000m to the NE where it has seen limited surface exploration.
- The SIP gold zone is a parallel gold bearing structure 100m east of the MRG zone and associated with extensive Cr alteration +/- sulfides.
- Several unexplained geochemical gold anomalies occur NE of SIP and may represent blind gold mineralization at depth.
- Upcoming drill program NE to extend the Main MRG Gold Zone & define the poorly explored SIP Gold Zone to the East.

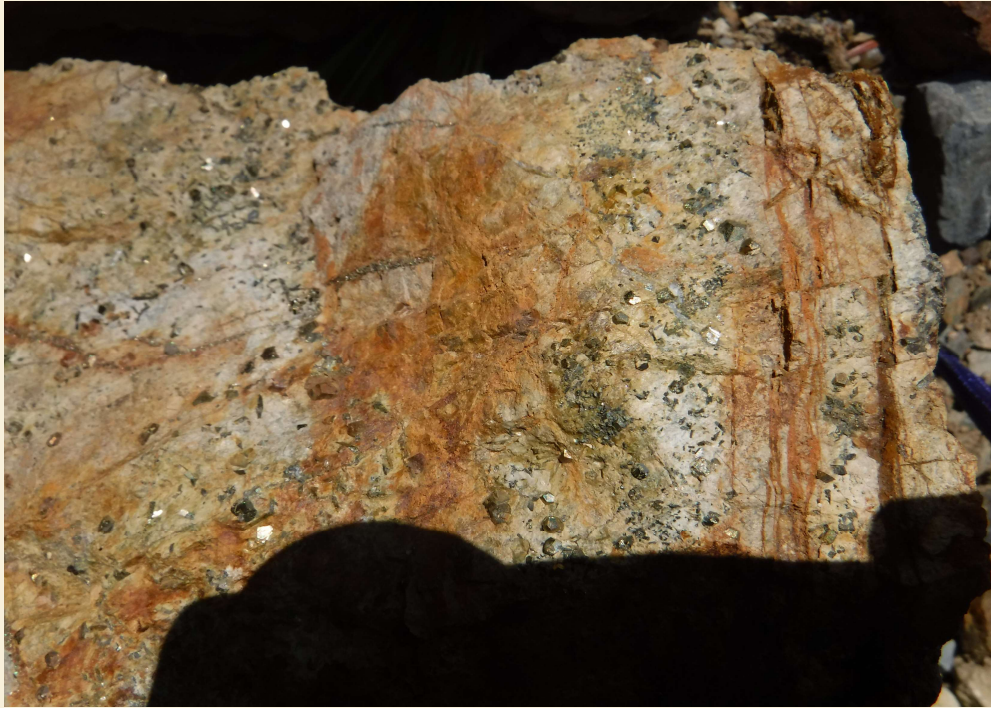


Middle River Gold Drill Results – (Drill Program #1)

Drill Hole #	Target	Best Intersection
MR-03-001	MRG	2.35 g/t Au over 9.95m *
MR-03-002	MRG	3.80 g/t Au over 10.0m *
MR-03-003	MRG	3.47 g/t Au over 17.60m *
MR-05-004 (1)	MRG	2.59 g/t Au over 5.35m
MR-05-004 (2)	MRG	0.84 g/t Au over 2.25m
MR-05-006	MRG	6.28 g/t Au over 7.75m *
MR-05-007	MRG	3.35 g/t Au over 8.4m *
MR-05-008 (1)	MRG	9.57 g/t Au over 3.90m
MR-05-008 (2)	MRG	2.41 g/t Au over 18.2m *
MR-05-009 (1)	SIP	0.82 g/t Au over 4.5m
MR-05-009 (2)	SIP	0.92 g/t Au over 1.55m
ES--92-1	MRG	1.07 g/t Au over 23.34m *
ES-92-2 (1)	MRG	3.66 g/t Au over 10.60m *
ES-92-2 (2)	MRG	1.52 g/t Au over 20.70m *
ES-92-3	MRG	1.70 g/t Au over 38.3m *
ES-92-4	MRG	2.85 g/t Au over 27.10m *
ES-8-87	SIP	5.43 g/t Au over 4.88m *
ES-11-87	SIP	7.31 g/t Au over 3.42m
ES-14-87	SIP	12.06 g/t Au over 1.50m

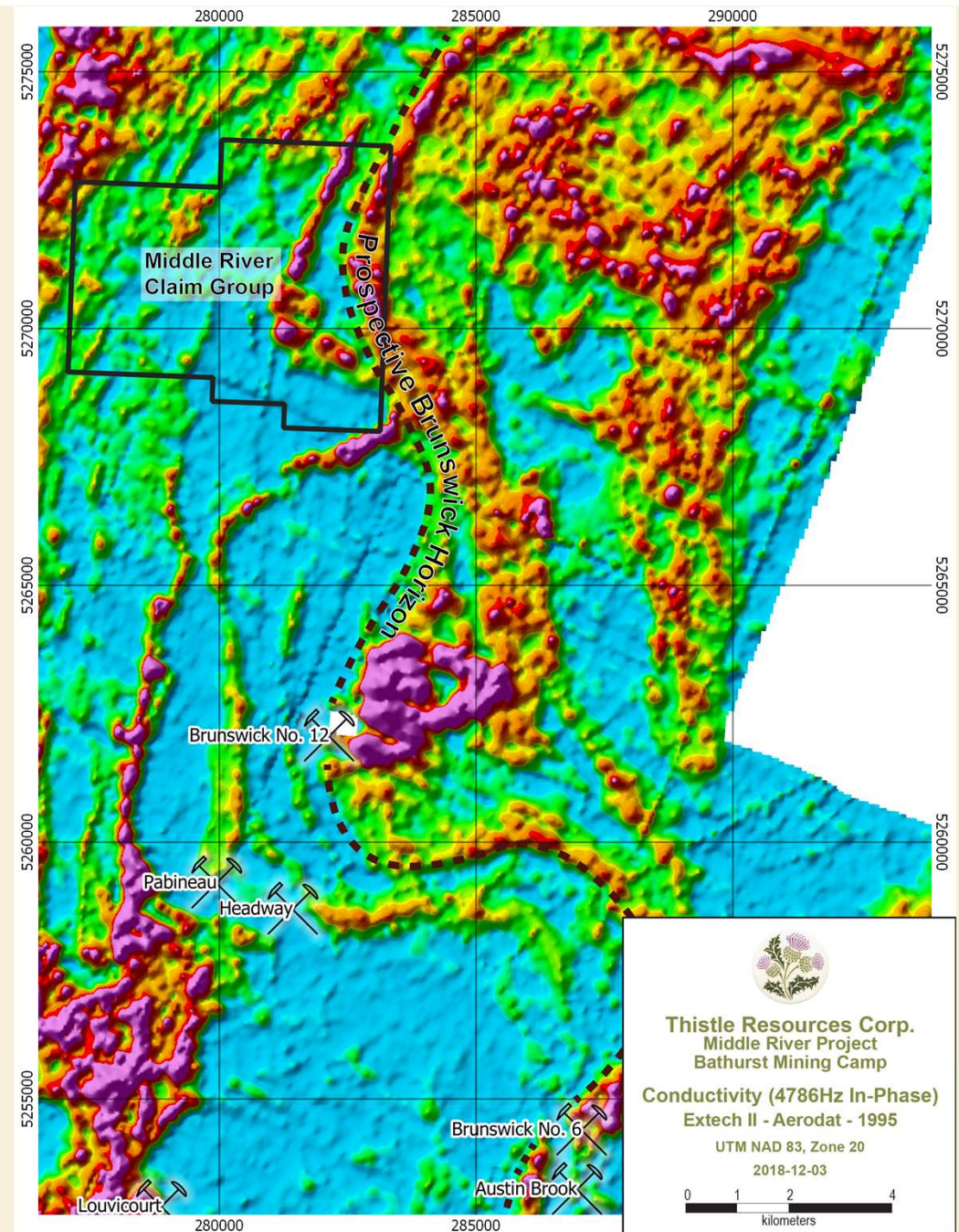


Middle River Gold Field Visit



Middle River VMS Project – Brunswick Extension Horizon

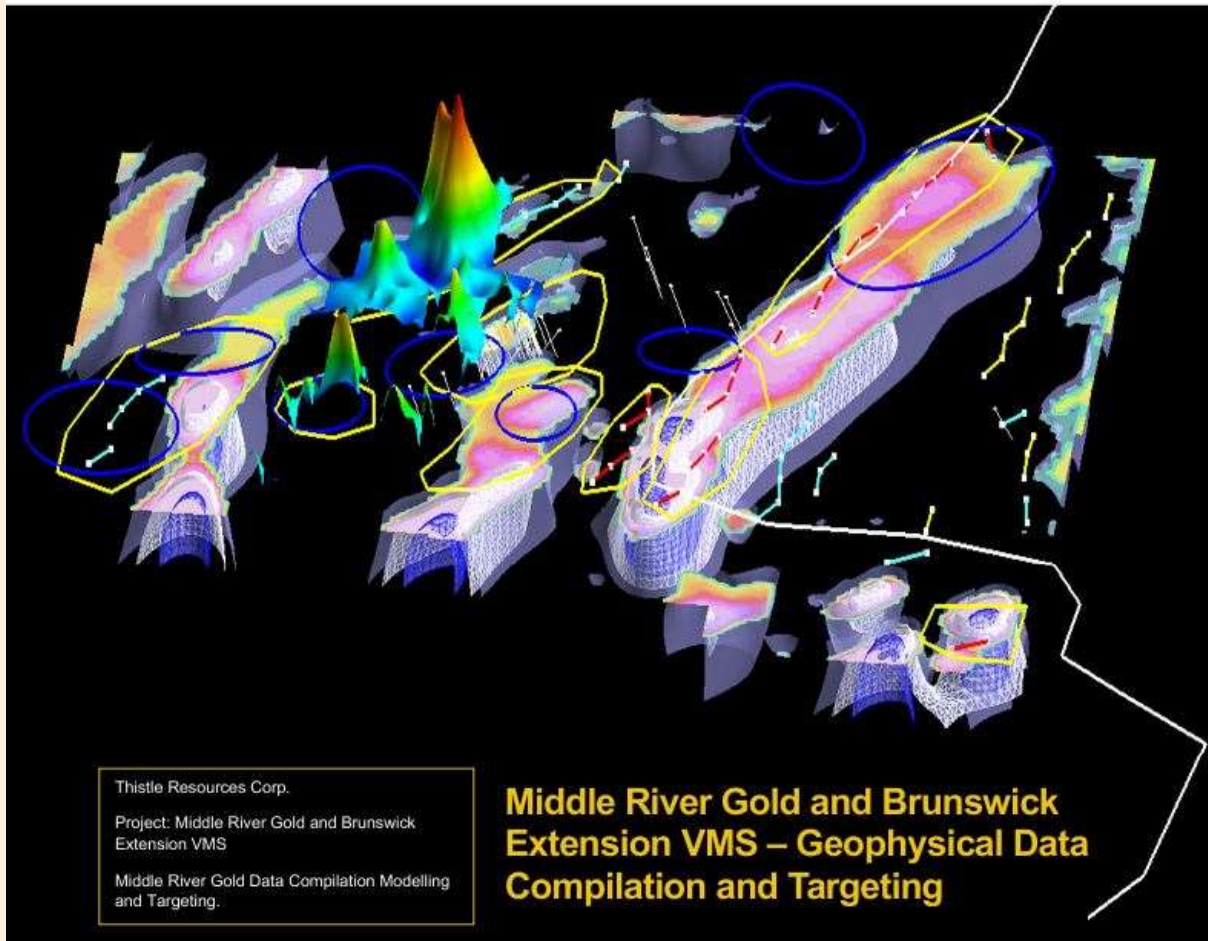
- Regional geophysics confirms good potential that the same horizon which hosts the Brunswick # 12 and Brunswick # 6 deposits extends through the eastern portion of the property.
- Anomalous base metals in soil samples within target area further highlight it's significant prospectivity.
- Only limited exploration has been carried out towards the eastern boundary, focused primarily on the strong central conductor.



EARTHEX GEOPHYSICAL DATA SOLUTIONS PROJECT

Middle River Gold & Brunswick Extension VMS
Entire Data Reprocessing – 3D Modeling - AI Analysis & Interpretation





Thistle Resources Corp.
Project: Middle River Gold and Brunswick
Extension VMS
Middle River Gold Data Compilation Modelling
and Targeting.

Middle River Gold and Brunswick Extension VMS – Geophysical Data Compilation and Targeting

Report Date	Coordinate System	Prepared By
December 2020	UTM Zone 20N – NAD83	Daniel Card P.Geo, RPGeo – EarthEx Geophysical Solutions

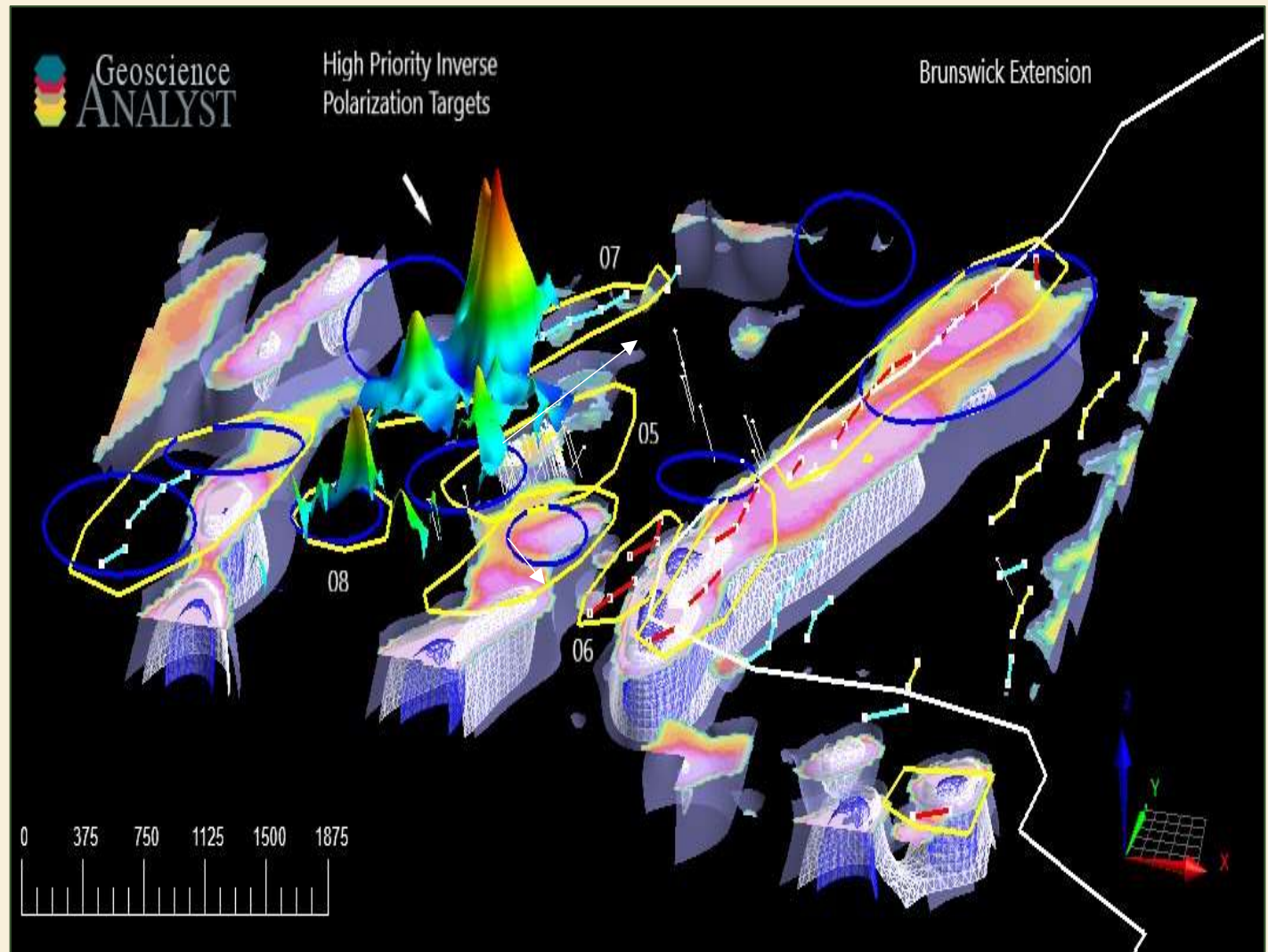


- Licences consolidated to facilitate government reporting and renewals.
- Digitization of historic diamond drilling, geochemistry and geophysical data.
- Geochemical data identified 9 base and precious metal targets throughout the project area.
- An isolated arsenic soil anomaly south of Middle River was investigated, 60+ soils collected in the vicinity. XRF analysis of soils confirming the presence of anomalous As in soil, indicating potential extension of MRG deposit to the south.
- 90 Km. of ground based VLF-EM and Magnetics completed by Vickers Geophysics Inc., Bathurst, New Brunswick.
- 3D modelling & AI Interpretation of Middle River Gold Zone and Bathurst Extension geophysical data by EarthEX Geophysical Solutions Inc. identified:
 - **5 High Priority (Au) Targets** that demonstrate the potential to expand the Middle River Gold Deposit.
 - **4 High Priority (VMS) Targets** identified along the Bathurst Extension with structural complexity and geophysical signatures consistent with characteristic BMC VMS mineralization.
- Sulphide bearing Felsic Volcanic rubble located in the southern portion of the project area.



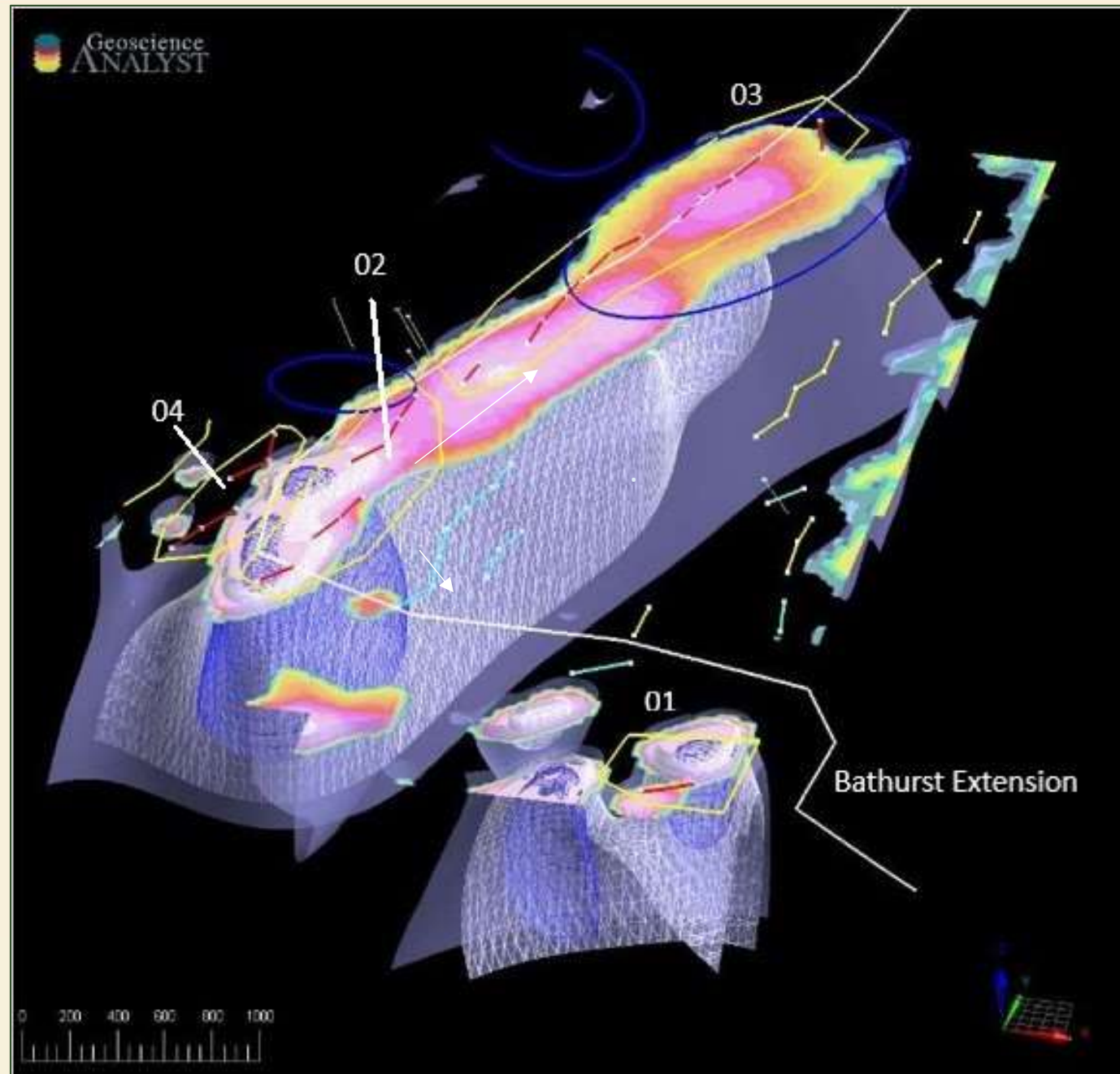
MRG Gold Deposit – High Priority Inverse Polarization Targets

- The EarthEX High Priority Inverse Polarization Targets Analysis shows a direct response over the current MRG Deposit (05) and a greater pronounced response over Target (07) & (08), characteristic of hydrothermal alteration typically seen in these types of deposits, the sinusoidal trend possibly due to folding of the stratigraphy.
- The Targets appear connected by a sinusoidal magnetic trend due to the repetitive folding of the stratigraphy, the greater responses at Targets (07) & (08) displaying the implied potential to significantly expand the current MRG Gold Deposit (05) along the “S” Trend Strike, resulting in a significant additional Au bearing deposit



Bathurst Extension VMS – EarthEX GeoPhysical Priority Targets

- On the Eastern Flank of the Property, the BMC “Brunswick Extension” is defined by a series of strong conductive responses coincident with a 3-km distinct magnetic trend, reflective of massive sulphide mineralization.
- The Trend is overlying favourable BMC Stratigraphy, the Magnetics are continuous, extremely strong, trending & dipping Northeast.
- Target (01) lies in an area of magnetic complexity and is defined by strong conductive responses at depth, along the flank of the Horizon.
- Targets (02) and (03), follows the 3-km magnetic northeast trend, consisting of locally truncated conductors, consistent with existing BMC VMS Deposits.
- Target (04) lies in an area of structural complexity on the western flank of the massive conductive body and a major structural feature, making this area the highest priority, the structural deformation is an ideal location for traditional massive sulphide deposits.
- EarthEX’s Proprietary AI & 3D Analysis has confirmed the long eluded “Brunswick VMS Extension”. The Priorities to drill are (02-04) , (03), & (01).



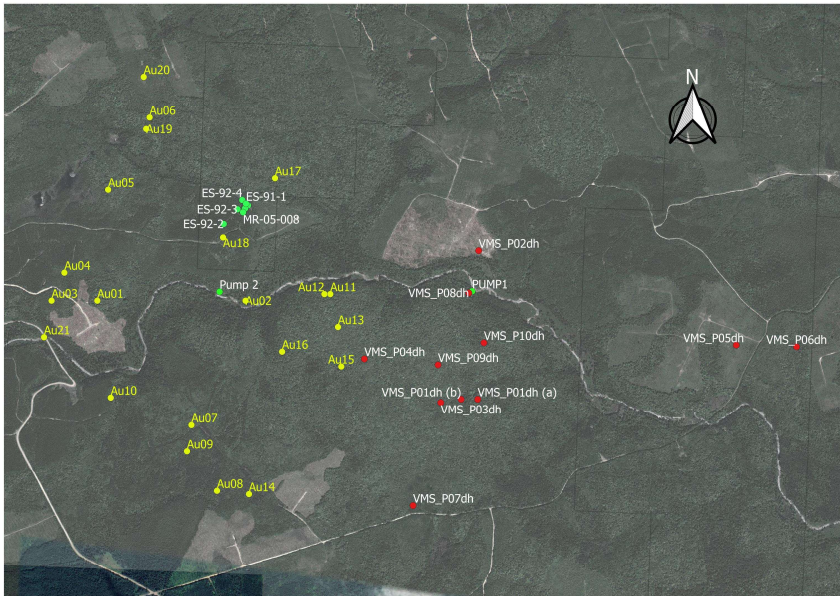
- EarthEX has identified & confirmed the relationship between the known gold mineralization and the magnetics at the Middle River Gold Deposit.
- Significant extension to the deposit is along strike and at depth. Multiple target zones should lead to additional discoveries along the “S-Trend”
- High-Definition UAV Drone Magnetics is recommended at targets (05 – 08) to define the magnetic “S” Trend & depth of entire target area including the known deposit.
- This is to be followed by a Ground I.P. Survey which will identify concentrations of sulphides along the S - Trend, providing priority drill targets.
- EarthEX identified & prioritized the strength of the magnetic conductors that were detected in the 3D Modeling & Re-Processing Analysis of the airborne MegaTEM data. The Trend runs North, dipping deeper.
- A ground based Electro-Magnetic survey is recommended to define robust drilling targets along the Bathurst Extension concentrating on Targets (01 – 04)



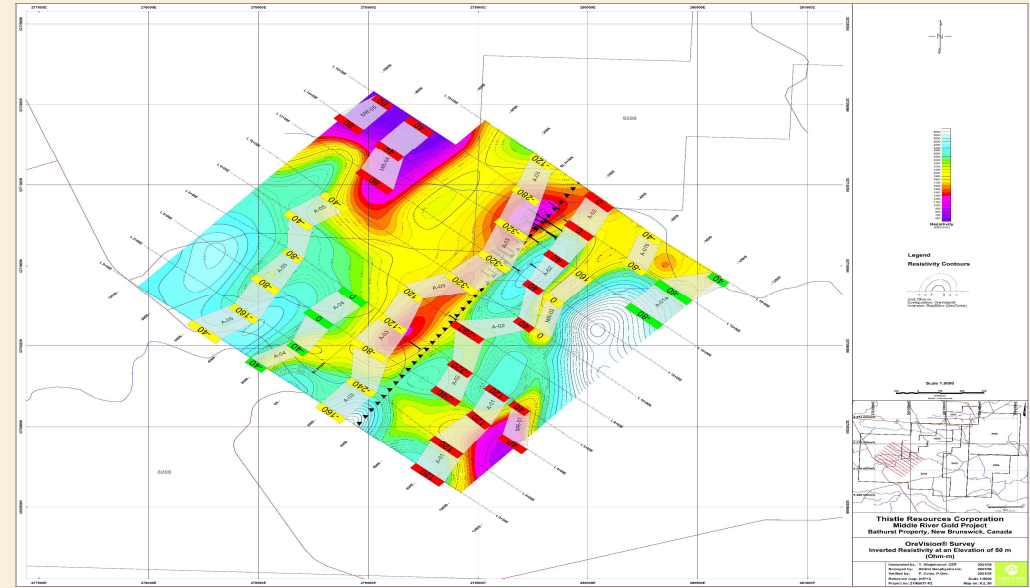
NEXT STEPS: (Middle River Gold – Bathurst Extension VMS)

- Au drill hole data to be modeled to identify the trend of mineralization in order to facilitate targeting in Phase 2 drilling.
- Bore Hole Electromagnetic (BHEM) Survey to be conducted on 2 VMS drill holes followed by modeling to identify subsurface mineralization. Drilling to follow.
- High-Definition UAV Drone Magnetics recommended along the northern portion of the 3 km. VMS target zone identified by EarthEx in 2021 (Target 3).
- Time Domain Electromagnetic survey (TDEM) over priority targets followed by modeling to define drill targets.
- Drilling in 2022 on both Middle River Gold and the Brunswick Extension VMS.

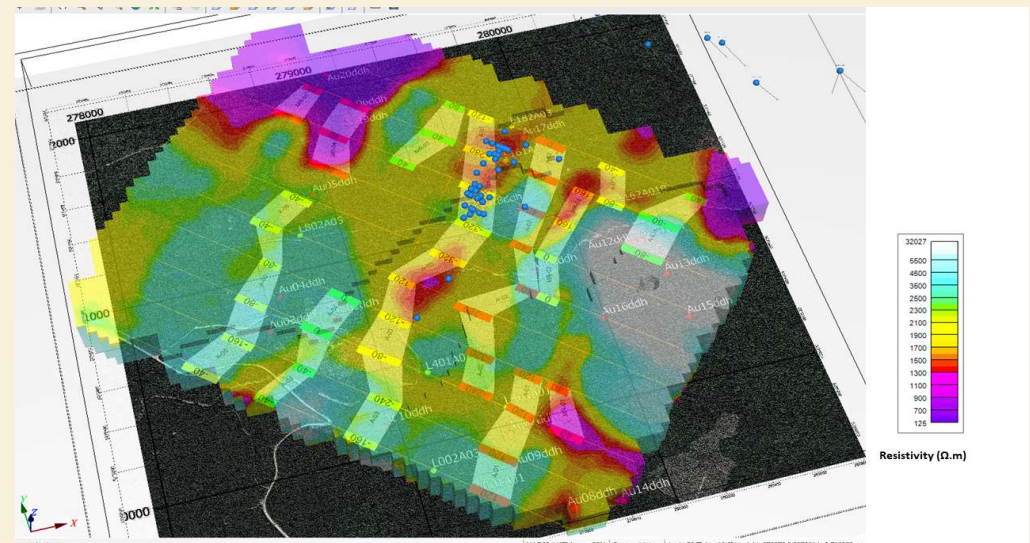
EarthEX 3D-AI (GeoVision 2000 & HD UAV Gold System Targets)



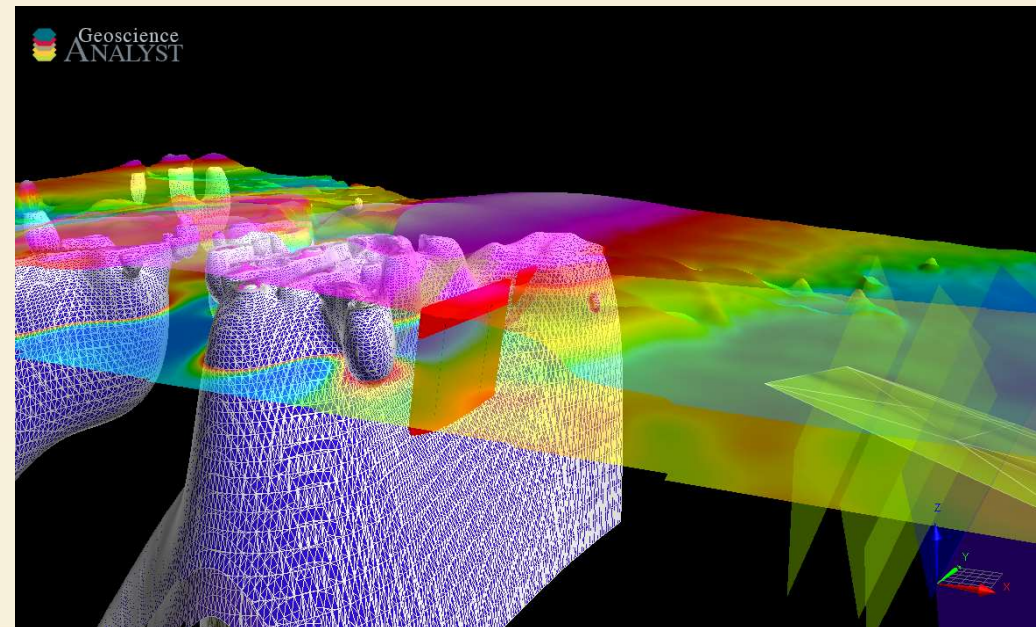
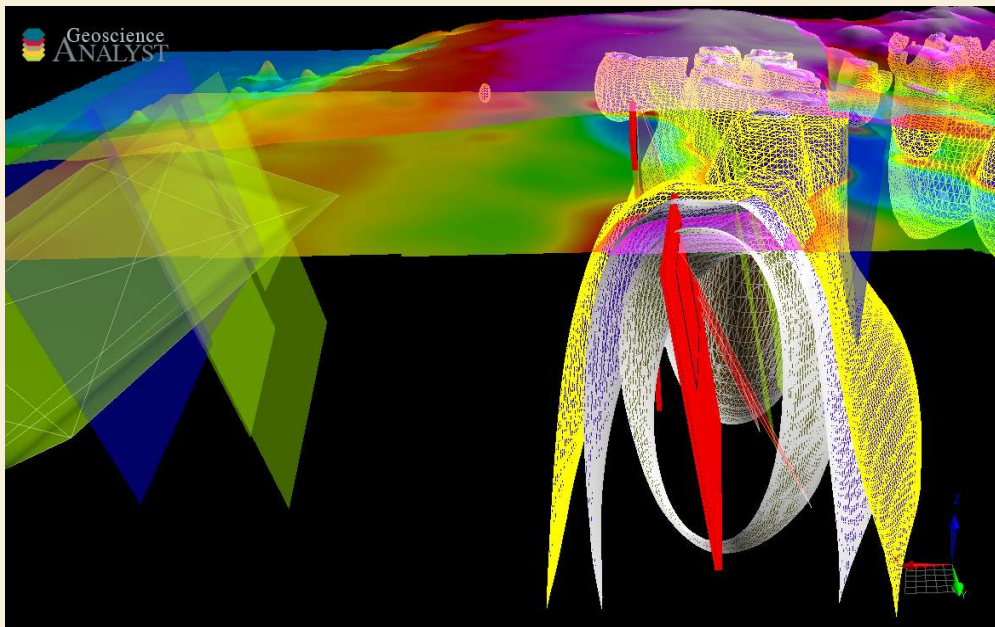
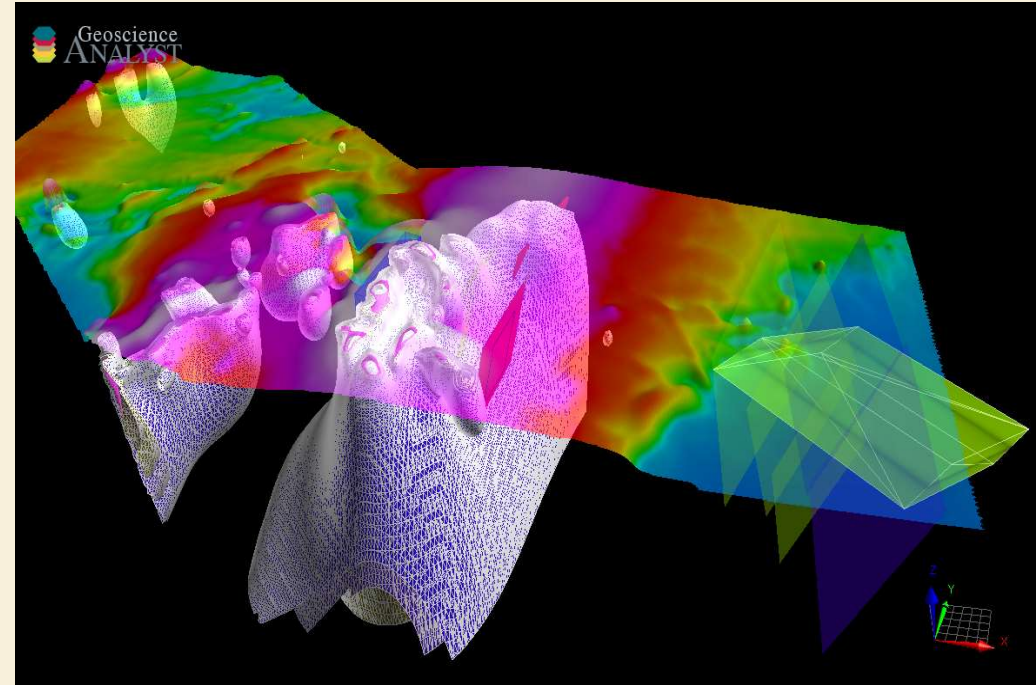
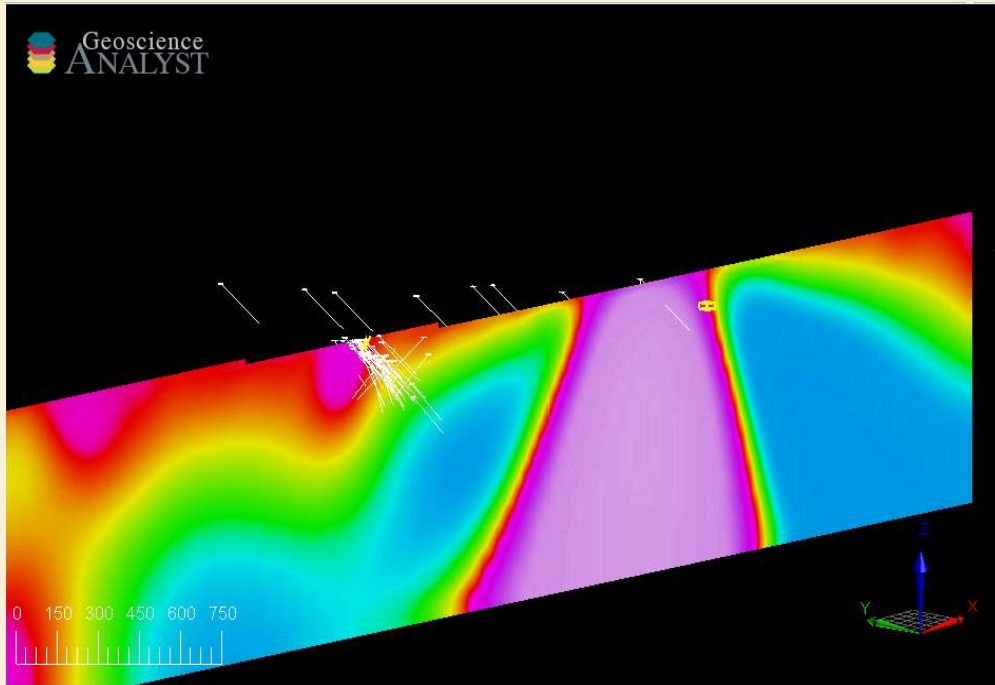
Massive 400m Deeper Zone still Untested or Drilled – Red & Purple Depicted Targets – North & South Corners of Grid



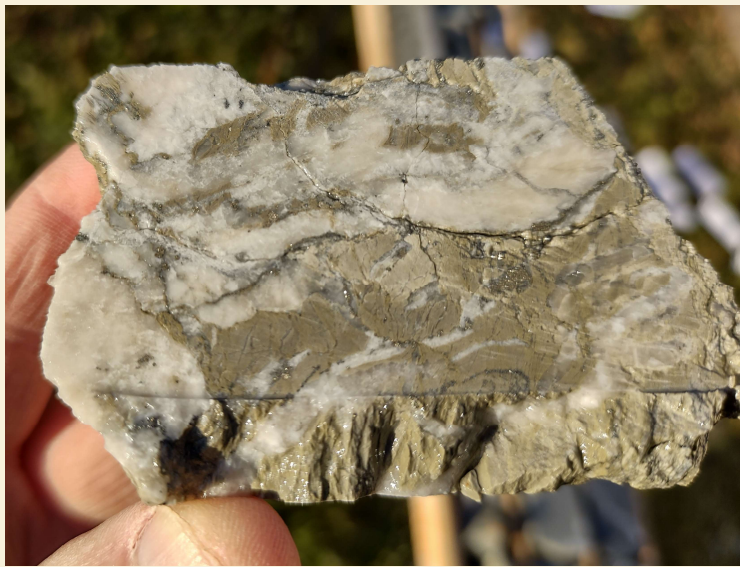
Identified 7 km Trend including (5) Au Mineralized Folds (Open in all directions) & continues north for potentially 15km



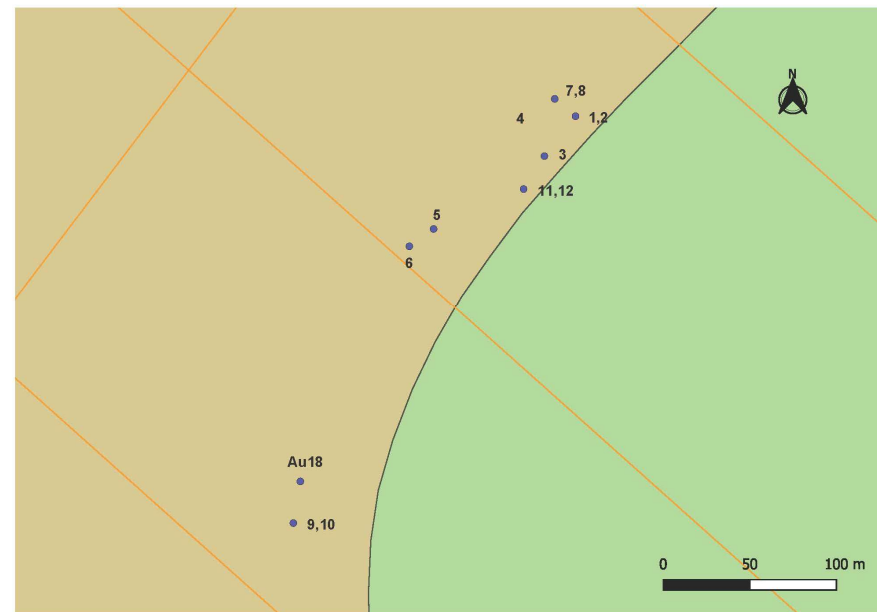
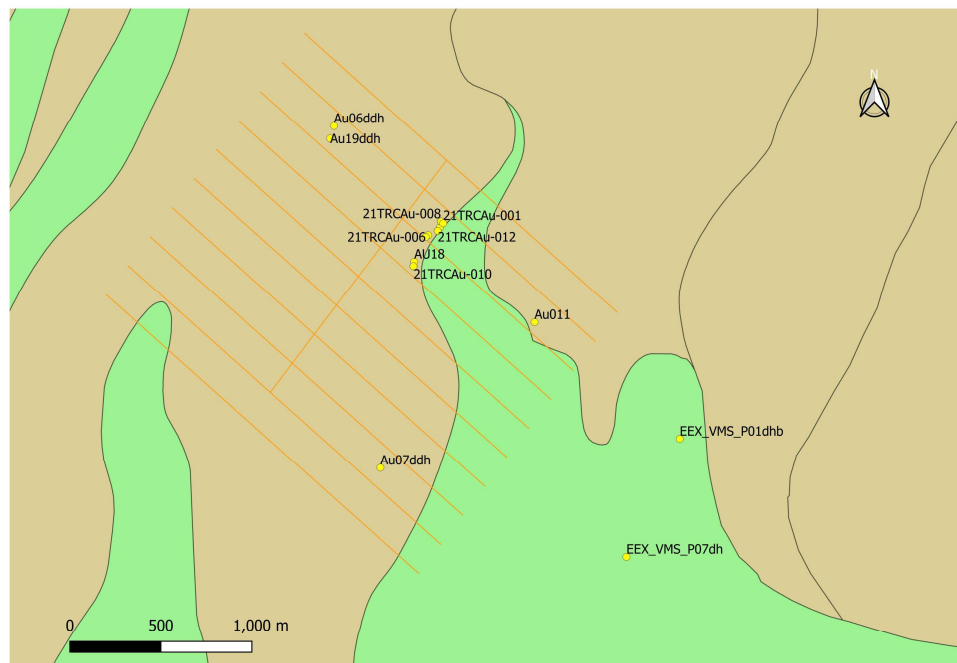
EarthEX 3D – AI (Gold & VMS Targets)



Thistle Resources DDH 2021 Fall Drill Program – Core Samples



DDH – Drillhole Program –
Phase #1 – DDH Locations



BOREHOLE EM Survey on
VMS001(b) & VMS007 –
Coming Soon !



Middle River Gold 2021 (Drill Program #2) - Results – NEW

Drill Hole #	Target	Best Intersection
AU03	MRG	4.04 g/t Au over 12.77m
AU03	MRG	Including: 5.28 g/t over 9.77m
AU03	MRG	Including: 14.58 g/t over 3.38m
AU02	MRG	1.64 g/t Au over 21.78m (Upper Zone)
AU02	MRG	Including: 2.16 g/t over 15.78m
AU02	MRG	Including: 2.60 g/t over 12.93m
AU02	MRG	Including: 3.0 g/t over 6.6m
AU02	MRG	0.85 g/t over 7.36m (Lower Zone)
21TRC-AU001	MRG	1.26 g/t Au over 33.0m
21TRC-AU001	MRG	Including: 1.40 g/t over 29.46m
21TRC-AU001	MRG	Including: 1.88 g/t over 21.97m
21TRC-AU001	MRG	Including: 2.33 g/t over 12.99m
21TRC-AU001	MRG	Including: 2.90 g/t over 9.99m
21TRC-AU001	MRG	Including: 3.90 g/t over 5.96m



Middle River Gold 2021 Drill Results – NEW

Drill Hole #	Target	Best Intersection
21TRC-AU005	MRG	0.58 g/t Au over 13.23m (Upper Zone)
21TRC-AU005	MRG	Including: 1.72 g/t over 4.33m
21TRC-AU005	MRG	0.48 g/t Au over 9.57m (Lower Zone)
21TRC-AU005	MRG	Including: 1.04 g/t over 4.25m
21TRC-AU005	MRG	Including: 1.34 g/t over 3.25m
21TRC-AU008	MRG	1.59 g/t AU over 23.52m
21TRC-AU008	MRG	Including: 2.60 g/t over 13.68m
21TRC-AU008	MRG	Including: 3.84 g/t over 8.68m
21TRC-AU008	MRG	Including: 7.13 g/t over 4.18m
21TRC-AU008	MRG	Including: 8.75 g/t over 3.06m
21TRC-AU009	MRG	0.57 g/t AU over 8.60m
21TRC-AU009	MRG	Including: 0.80 g/t over 6.15m
21TRC-AU012	MRG	0.52 g/t AU over 10.36m (Upper Zone)
21TRC-AU012	MRG	Including: 1.06 g/t over 5.01m g/t over 6.15m
21TRC-AU012	MRG	4.38 g/t AU over 10.50m (Lower Zone)
21TRC-AU012	MRG	Including: 6.13 g/t over 7.50m

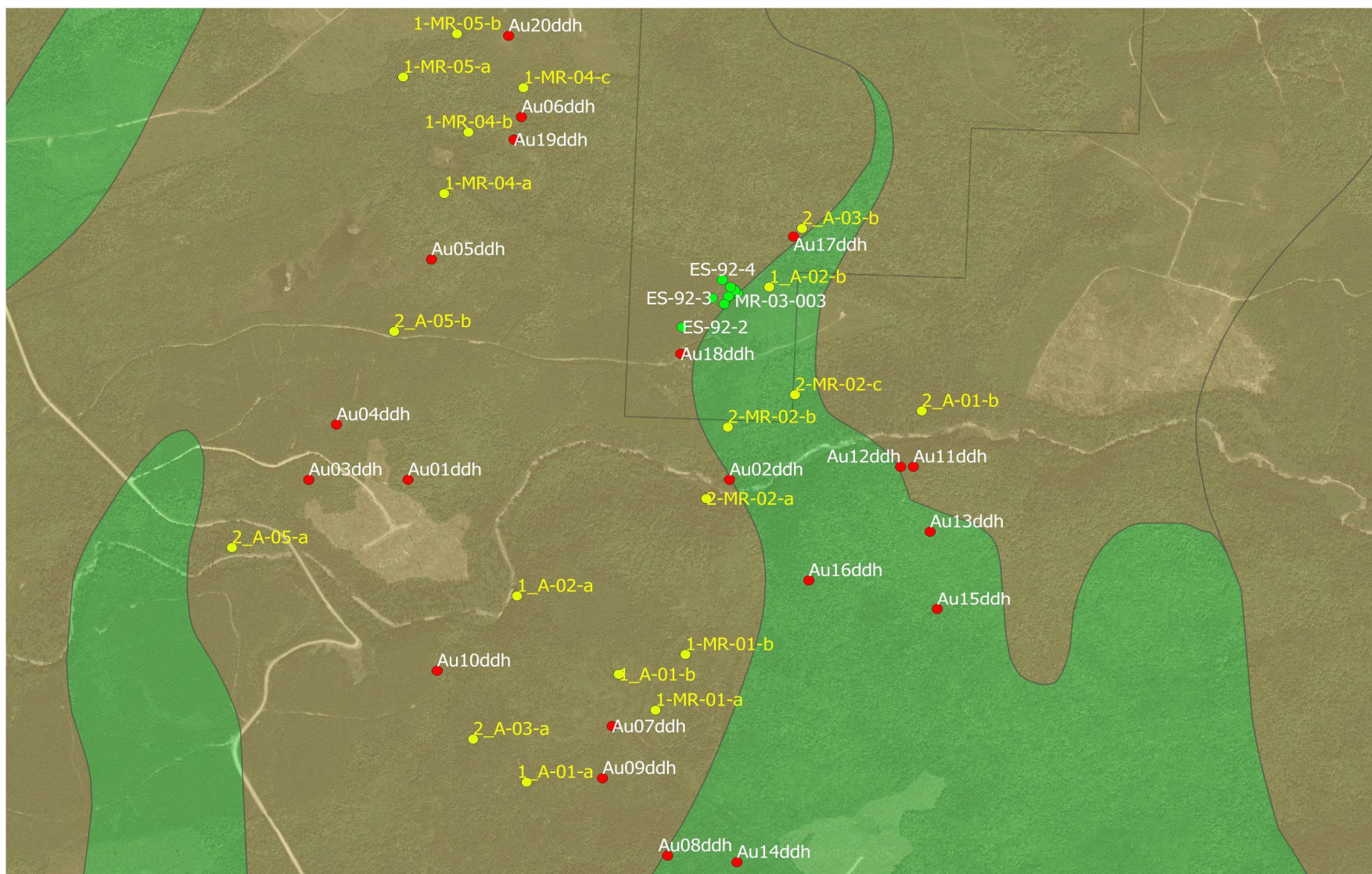


Middle River Gold 2021 Drill Results – NEW

Drill Hole #	Target	Best Intersection
21TRC-AU011	MRG	0.65 g/t AU over 25.45m
21TRC-AU011	MRG	Including: 2.27 g/t over 6.68m
21TRC-AU011	MRG	Including: 3.00 g/t over 3.70m
21TRC-AU011	MRG	Including: 1.87 g/t over 1.98m
21TRC-AU011	MRG	Including: 1.34 g/t over 3.25m
21TRC-AU004	MRG	0.29 g/t AU over 20.04m (Upper Zone)
21TRC-AU004	MRG	Including: 0.64 g/t over 6.00m
21TRC-AU004	MRG	0.46 g/t AU over 3.70m (Lower Zone)
21TRC-AU010	MRG	1.25 g/t AU over 17.16m
21TRC-AU010	MRG	Including: 4.90 g/t over 4.90m
21TRC-AU010	MRG	Including: 4.43 g/t over 4.64m
21TRC-AU010	MRG	Including: 3.80 g/t over 5.52m
AU18	MRG	0.30 g/t AU over 6.02m
AU18	MRG	Including: 0.45 g/t over 4.02m
		Including: 0.36 g/t over 5.02m
21TRC-AU009	MRG	0.57 g/t AU over 8.60m
21TRC-AU009		Including: 0.80 g/t over 6.15m



DDH PROGRAM – PHASE #2 (COMING SOON)



Patrick J. Cruickshank, MBA, **President & CEO**

Mr. Cruickshank is the Founding – President & CEO of Thistle Resources Corp.

Mr. Cruickshank, received his MBA at Canada's Highly Prestigious York University – Schulich School of Business. Patrick brings a wealth of experience from the Private Wealth Management Sector, Protecting & Managing Wealth for over 15 years @ Merrill Lynch, Citigroup Capital Markets, Smith Barney and Legg Mason to name just a few. Patrick was an NFLPA Financial Advisor for over a decade helping financially educate, wealth creation & Long-term wealth preservation strategies for NFL Professional Players and their families.

Mr. Cruickshank also serves on the Boards of:

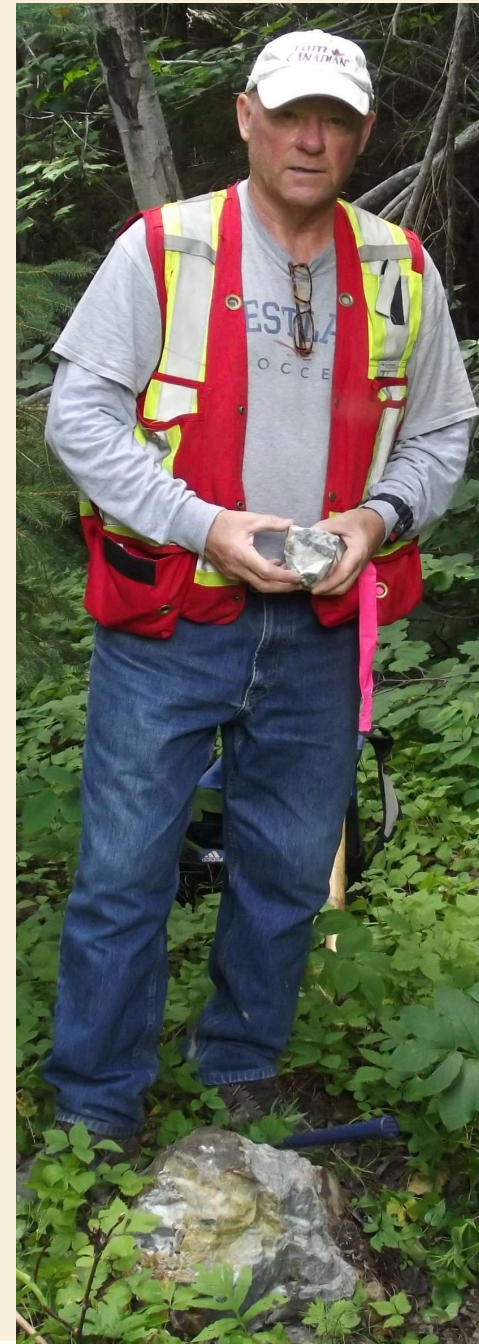
Atacama Copper Exploration (Canada & Chile)
Fiddlehead Mining Corp (NB, Canada)

Royal Stewart Resources Corp. (NB, Canada)
Minotaur Atlantic Exploration Ltd (NS, Canada)

Mr. Cruickshank specializes in establishing and growing companies, driving shareholder value through a long-term business strategy from inception to growth to exit. Mr. Cruickshank is often invited to speak @ Resource Summits in Canada, Chile, Peru, London & Germany. Patrick is an active Panel Guest Speaker of the Toronto Stock Exchange Venture (TSX-V) & the Santiago Stock Exchange (SSE) Industry Events. Mr. Cruickshank is frequently interviewed on Radio Show & Industry Publications within the Resource Sector.

Mr. Cruickshank, is a Former Canadian Olympic/U23 Soccer Player and US NCAA D1 Collegiate Player. Patrick is also a very highly decorated US & Canadian Coach, from being a Professional Soccer Player to coaching Canada's Women to University of Mississippi to US Olympic Development Staff Coach. Patrick holds his US Soccer "A" License & Canadian National Coaching Licenses.

Patrick now enjoys coaching soccer to his 6 children..



Gary Lohman, B.Sc., P.Geo COO & SVP Director of Exploration

Mr. Lohman is a Founder and Chief Operating Officer of Thistle Resources Corp. As an exploration geologist, he has 40 years of experience in both precious and base metal exploration within the Americas Management experience within and outside of the mining industry.

Skilled in geological, geochemical and geophysical exploration techniques in a wide variety of settings including Volcanogenic Massive Sulphides (VMS), Porphyry & IOCG (Copper/Gold) Style Deposits. Experience includes evaluations / research conducted on bonanza grade and bulk tonnage gold-silver properties in Canada, Mexico, California, Ecuador & Chile. Evaluated and conducted research on a variety of Industrial mineral projects including graphite, titanium, zeolites and building stone.

Mr. Lohman is also the President of Atacama Copper Exploration Limited in Chile. A Private Canadian Exploration Company focused on Large Scale IOCG – Cobalt Exploration.

Gary also holds several Board Positions:

Atacama Copper Exploration Limited, Minotaur Atlantic Exploration Limited,
Royal Stewart Resources Corp, Fiddlehead Mining Corp. & Nine Mile Metals Ltd.

Gary is based in Bathurst, New Brunswick throughout the year, conducting exploration in addition to working with various agencies within the provincial government including the Department of Mines and Forestry.



Chris Carmichael, B.A., CPA CFO & Strategic Business Advisor

Mr. Carmichael is a Certified Professional Accountant and has been the President of CRIS Inc., a CFO Services firm since 2010.

Mr. Carmichael is and has been a board member and/or Chief Financial Officer of numerous Canadian public companies across many sectors.

Mr. Carmichael has been CFO and/or Director of mining explorations companies including Morgan Resources Corp. (New Brunswick), Bison Gold Resources Inc. (Manitoba), Stakeholder Gold Corp. (New Brunswick), Paradox Potash (Utah) and Virgin Metals Inc. (Mexico). Mr. Carmichael has been CFO and/or Director of other Canadian public companies including GC-Global Capital Corp. (Merchant banking), GDV Resources Inc. (Merchant banking), Bucephalus Capital Corp. (Merchant banking), Rise Life Science Corp. (Cannabis), Leviathan Cannabis Group (Cannabis), VIQ Solutions Inc. (Technology), BNSellIt Technology Inc. (Technology) and Brane Inc. (Blockchain – pre-public).

Mr. Carmichael specializes in financial reporting, listing companies on the TSXV or CSE, structuring financings and advising on mergers and acquisitions.

Besides Chris' financial and professional accolades and achievements, Chris coaches his children in basketball, baseball and enjoys distance running and golfing with the family.



Stuart Wells, B.Sc., P. Geo. VP of Exploration

Stuart is a senior exploration geologist with over 30 years' experience spanning multiple continents and deposit types but specializes in VMS style deposits (mineral exploration & mine geology) in the Bathurst Mining Camp, NB.

Most recently, for the past 5 years, Stuart was the Senior Project Geologist for Trevali Mining Corporation's New Brunswick exploration team, where he oversaw the company's mineral exploration and resource expansion activities at the producing VMS deposit, Caribou Mine. During his 5+ years with Trevali, Stuart either led or was directly involved in several successful exploration programs in surface exploration and underground drilling operations.

Stuart is fluent in a host of GIS and geological modelling software including MapInfo, QGIS, ArcGIS, LeapFrog Geo and Discover3D.

Stuart's career has spanned several decades and has been a member of the geology Team at; Trevlai Corporation, Stratabound Minerals, Xstrata Zinc, Noranda Exploration, Shear Exploration and Shell Canada Resources Ltd. Stuart also worked for both the NF Department of Mines and more recently, the NB Department of Energy and Mines.

Stuart graduated with a Bachelor of Sciences (Geology) from Memorial University, St John's, Newfoundland, in 1979.





DANIEL CARD, P.GEO, RP.GEO EARTH EX GEOPHYSICAL SOLUTIONS INC.

EarthEX Geophysical Solutions Inc was founded in 2014 in Selkirk, Manitoba, Canada by its Chief Geophysicist, Daniel Card. Mr. Card, P.Geo, RP.Geo, a professional Geophysicist, holds a BSc. Honours Degree from the University of Manitoba and is currently registered in Canada and Australia.

His career started with Xstrata (now Glencore) where he worked his way up to Project Geophysicist at Raglan Mine in northern Quebec, and then went on to serve at Xstrata's Western Australian operations Cosmos and Sinclair in the Leinster-Wiluna nickel camp, where he played a key role in the discovery and definition of the 9 MT Odysseus Nickel Sulphide Deposit, which is soon going into production for Western Areas Ltd.

Following his tenure at Xstrata, he went on to work as Senior Geophysicist for Southern Geoscience Consultants in Perth, WA, where he served as the staff electromagnetics specialist. He also served as the technical lead on many mineral exploration projects. He continued as a senior technical consultant to Abitibi Geophysics and an expert peer reviewer for the journal "Exploration Geophysics".

At EarthEX, we are specialized in geophysical prospecting, data interpretation, 3D modelling and target definition for hard-rock minerals. We work with cutting edge technologies and data analysis methodology.

In the search of all mineral commodities for projects across the globe, Daniel has worked extensively with geophysical data of all varieties. Particularly, unique experiences that he holds close to the heart include; training local scientists in the use of geophysical equipment in the VMS regions of Eritrea, and an internship at NASA's Lunar and Planetary Institute where he analyzed ground penetrating satellite radar data from Mars' polar regions.

Since its inception, EarthEX has gained widespread recognition for its scientific accomplishments for its clients & partners.



Graham W. Halcrow, B.Sc., UNB

Exploration Geologist – GIS Specialist

Mr. Halcrow is a recent graduate from the University of New Brunswick in Fredericton. He completed a Bachelor of Science in Earth Science in 2023 and immediately entered the exploration industry.

During his undergraduate, Mr. Halcrow studied and participated in research on styles of mineralization of highly fractionated porphyry tin-tungsten-molybdenum systems directed by Dr. Lentz, PhD., Research Chair in Economic Geology, University of New Brunswick.

Mr. Halcrow is applying his mineral deposits knowledge to a new variety of mineral systems including VMS and IOCG models specifically in the World-Famous Bathurst Mining Camp (BMC).

Mr. Halcrow is proficient in QGIS and ArcGIS in addition to Geosoft and Mira modeling software.

Graham resides in Fredericton, NB where he enjoys long-distance cycling and backpacking.



Exploration Team and Technical Advisory Committee

Kevin A. Vienneau, B. Engineering Mineral Resource Engineer

Mr. Vienneau has been involved in Mineral Exploration since 2004. Kevin has been heavily involved in the Bathurst Mining Camp Exploration for over 18 years and has extensive experience in the Mining Exploration sector.

Kevin worked with Stratabound Minerals Corp for over 10+ years and brought the company from solely an exploration company to an open pit producing VMS mine at one of their properties. During production, Kevin transitioned to the Mine Production Manager responsible for over 100 employees. His experience also includes field exploration and drill program (QA/QC) protocols design & implementation. Kevin also comes highly skilled in technical GIS database design & management, Resource Estimate Analysis & EIA Authoring for Environmental Impact Assessment Reports to the NB DEM. Kevin has been involved in (5) Resources Estimate and (3) PEA's with 3rd party Engineering firms.

His experience from working at the World Famous Brunswick Mine is invaluable for Bandera Pass Gold Corp, especially for its VMS Portfolio in BMC (Recently purchased from Osisko Metals Inc).

A skilled negotiator, Kevin has successfully negotiated with First Nations, Land Owners, Vendors and Government Agencies.

He completed a Bachelor of Engineering Degree in Mineral Resource Engineering from Dalhousie University, NS in 2014. Kevin has also studied for 3 years at Acadia University in Wolfville, Nova Scotia, Canada.

Kevin currently serves on the Board of Founders Metals Inc Company helped take the company public in 2021 as well as serving on the Technical Advisory Board of:

- Bandera Pass Gold Corp - Royal Stewart Resources Corp – Thistle Resources Corp

Kevin currently makes Bathurst, New Brunswick his home and is a pillar in the community and currently serves as the President of the Bathurst Marina.





Ronald Godin, B.A., LLB., QC Corporate Strategic Advisor

A native of Bathurst, New Brunswick, Mr Godin received a Bachelor's degree in Political Science in 1972 from the Universite de Moncton and being awarded the Governor General of Canada Medal for the Highest Academic Achievement of his graduating class.

Mr Godin continued his academic journey at the prestigious University of Ottawa Law School and graduated in 1975. Ron became a Crown Prosecutor for the Department of Justice of New Brunswick from 1975–78. Mr Godin was Appointed Queen's Counsel in 1994.

He transitioned to a very successful Private Law Practice and in 1994 was appointed Queen's Counsel where he remained until 2004, when he was appointed by the Legislative Assembly of the Province of New Brunswick as the 1st Consumer Advocate for Insurance for the Province of New Brunswick. Mr Godin held that position until his retirement in 2017.

Mr Godin has a long list of community service & outreach endeavors. He was the Founding President of the Chaleur Regional Hospital Foundation, Bathurst, NB. Mr Godin has always been an active speaker at many Legal Forums and participated in various professional committees of the Law Society of New Brunswick and was a regular speaker at the Bar Admission Courses.

Mr Godin remains an active advocate in his community and mentor. Ron is fluent in French and English. Ron has 2 children and now enjoys spending time with his Grandson in Bathurst New Brunswick.



Team Structure

Patrick J Cruickshank, MBA
Chairman, President & CEO, Director
Schulich School of Business (MBA)
York University, Ontario

Chris Carmichael, BA, CPA
Chief Financial Officer
Advisory Committee
University of Western Ontario, ON

Stuart Wells, B. Sc., P.Geo.
VP of Exploration
Memorial University, NFLD

Kevin A. Vienneau, B. Engineering
Mineral Resource Engineer
Technical Advisory Committee
Dalhousie University, Nova Scotia

Ronald Godin, B.A., LLB, QC
Corporate Strategic Advisor
Universite de Moncton, NB
University of Ottawa Law School, ON

Alex Cameron, Technician
Core Technician, Heavy Equipment
Bathurst, NB Canada

Gary Lohman, B.Sc., P. Geo.
Director of Exploration & COO, Director
Technical Advisory Committee
University of Toronto

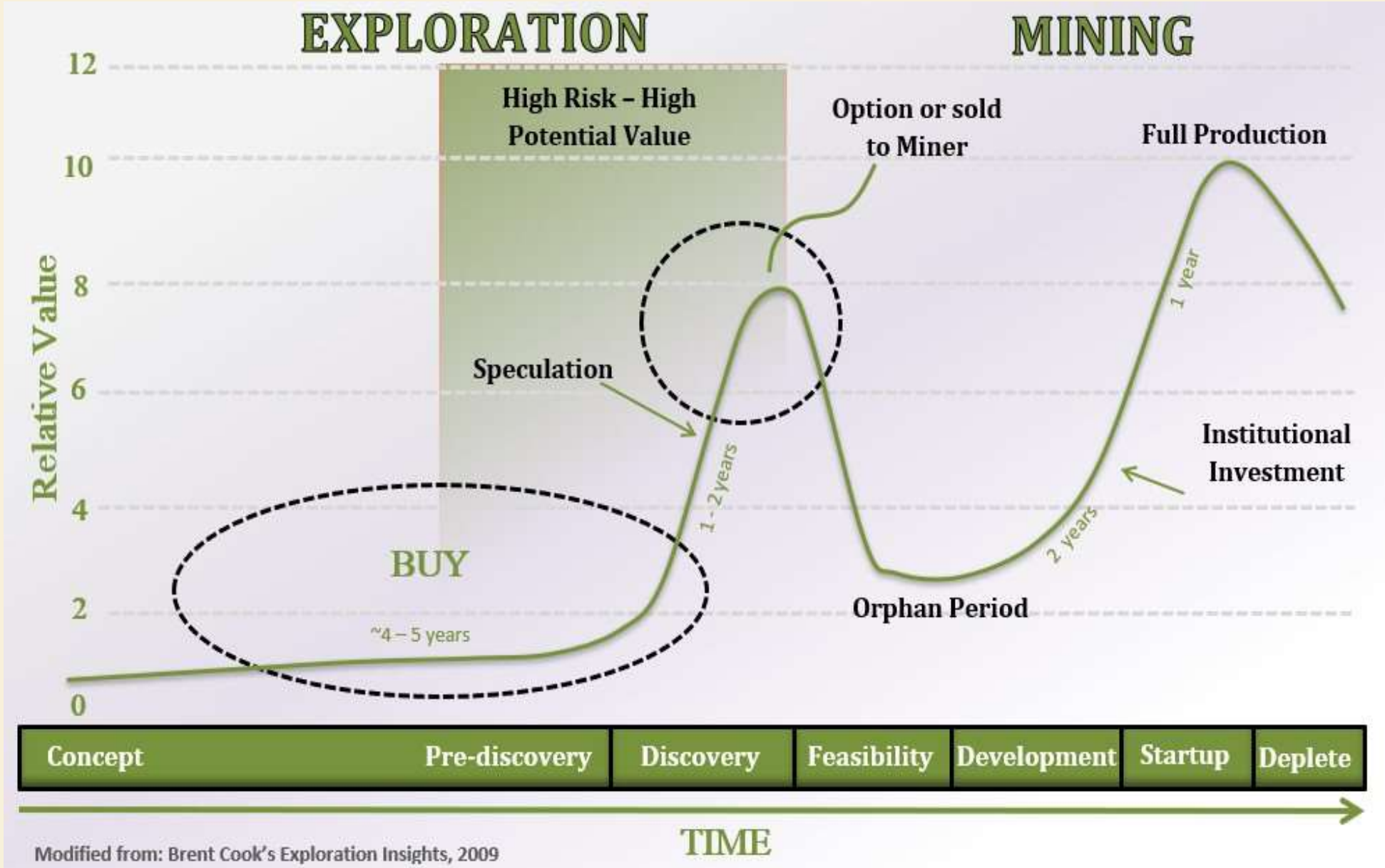
Daniel Card, B.Sc., P.Geo, RP.Geo
EarthEX Geological Solutions
Technical Advisory Committee
Univ. of Manitoba

Graham Halcrow, Geo., B.Sc.,
Exploration Geologist
GIS Analyst & Specialist
University of New Brunswick, Fredericton

Kieran Cruickshank, B. Eng,
Civil Engineer,
Technical Lab Analyst
University of Edinburgh, UK



Know the Investor Life Cycle



**PATRICK J. CRUICKSHANK, MBA
PRESIDENT & CEO**

patrick@thistleresources.com
737-297-0519

**GARY LOHMAN, P. GEO
DIRECTOR OF EXPLORATION, COO**

gary@thistleresources.com
905-299-8552



Canada 

